

User Manual



SC Single Door Triple Deep (SC 1 3D), (SC 1 3D WH)



For your safety, follow ALL instructions in this User Manual to minimize the risk of fire, electric shock, exposure to ozone gas, property damage, personal injury, or loss of life. Failure to follow the instructions in this User Manual will void the ZONO™ Cabinet warranty.



For service, call ZONOsanitech™ 770-212-9201 Ext 3
Copyright © 2024 ZONOsanitech™
Patent Pending



Contents

1.	Welcome.....	3
2.	Glossary.....	4
3.	Ozone Safety Information.....	6
	Ozone exposure limits and guidance.....	6
	Ozone sensors.....	6
	Color and odor.....	6
	Effects of short-term, low exposure.....	6
4.	Heat Safety Information.....	7
	Outside cabinet temperature.....	7
	Inside cabinet temperature.....	7
	Remove Water Reservoir.....	7
5.	Installation and Leveling.....	8
	Installation Location.....	8
6.	Level the ZONO™ Cabinet.....	9
	Power Switch.....	10
	Display.....	11
	Door Open Notification.....	11
	Exterior Emergency Stop Button.....	12
	Interior Emergency Stop Button.....	12
	Green Button.....	12
7.	Initial Startup.....	13
	General safety guidelines.....	16
	Choose items for the SANITIZING Cycle.....	17
	Load items into the ZONO™ Cabinet.....	20
	Load Tray Cart.....	21
	Hang items and load large or bulky items.....	23
	Run a Cycle and Lock the Door.....	24
	What to do if the ZONO™ Cabinet loses power.....	27
8.	Additional Display Messages.....	29
9.	Troubleshooting Messages That Require User to Call ZONOsanitech™.....	36
10.	Emergency Procedures.....	41
	Person inside the ZONO™ Cabinet during a cycle.....	41
	Suspected or Confirmed Ozone Exposure.....	42

First Aid Measures	42
11. General Care Instructions	43
Cleaning	43
Weekly Care Tasks	43
Moving the ZONO™ Cabinet	44
Ozone sensor maintenance	44
12. Statistics (Number of Cycles Run)	45
13. ZONO™ Cabinet Humidification System.....	46
14. Service Guidance.....	46
15. Safety Data Sheet (formerly MSDS).....	47
Human Hazards and Precautionary Statements – See Section 2	47
Physical or Chemical Hazards and Precautionary Statements – See Section 2	47
Environmental Hazards and Precautionary Statements – See Section 2	47
16. End User Limited Warranty Certification	53
17. EPA Label	54

1. Welcome

Thank you for purchasing the ZONO™ Disinfecting+ and Sanitizing* System (Sanitizer).

Our ozone sanitizing technology is thoroughly tested and proven effective and safe when properly used. The ZONO™ Cabinet saves countless hours of manual work to sanitize toys, equipment, protective gear, clothing, and other items. The ZONO™ Cabinet kills 99.9% of common viruses+ and bacteria*. The ZONO™ Cabinet heat unit has proven 100% effective at killing lice, bed bugs and their eggs.

This User Manual applies to the:

- **SC Single Door Triple Deep (SC1 3D) Without Heat**
- **SC Single Door Triple Deep (SC1 3D WH) With Heat**

+Disinfecting level (kills 99.9%): Norovirus, Influenza-A, and Respiratory Syncytial Virus on non-porous surfaces.

*Sanitizing level (kills 99.9%): Staphylococcus aureus, Methicillin-Resistant Staphylococcus aureus, Escherichia Coli, Streptococcus Pyogenes, Shigella dysenteriae, Salmonella Enteritidis, and Pseudomonas Aeruginosa on non-porous, semi-porous and porous surfaces.

2. Glossary

<p>Access Code</p>	<p>A sequence of numbers that must be entered on the Display before you can lock or unlock the ZONO™ Cabinet door or start a cycle</p> <p>Your Access Code is 1364.</p>
<p>Display</p>	<p>The touch-screen shows the current status of the ZONO™ Cabinet. It is used to enter the Access Code - 1364 and to select a SANITIZING or HEAT cycle (depending on the model) and to lock and unlock the door to the ZONO™ Cabinet.</p> <p>The color of the Display indicates the status of the Magnetic Door Lock:</p> <ul style="list-style-type: none"> • GREEN when the door is locked. • RED when the door is unlocked.
<p>Door Gasket</p>	<p>Seal around the door that ensures ozone is contained within the ZONO™ Cabinet</p>
<p>Engine</p>	<p>Located inside the ZONO™ Cabinet at the top right of the ZONO™ Cabinet. The engine produces ozone gas and allows cycles to run.</p>
<p>Exterior Emergency Stop Button</p>	<p>Located outside the Zono™ Cabinet on the front of the door.</p> <p>Pressing the Exterior Emergency Stop Button immediately:</p> <ul style="list-style-type: none"> • Stops the ZONO™ Cabinet from operating. • Stops the generation of ozone. • Begins to destroy existing ozone. • Allows the door to be opened. • Does NOT turn the ZONO™ Cabinet off. <p>See page 11 for details.</p>
<p>Green Button</p>	<p>Located inside the ZONO™ Cabinet on the bottom of the Engine.</p> <p>Must be pressed to start a SANITIZING or HEAT cycle (depending on the model) or to lock the door to the ZONO™ Cabinet</p>
<p>Heat Unit</p>	<p>The Heat Unit uses high temperatures to kill lice, bed bugs and their eggs.</p> <p>The HEAT cycle is longer than the SANITIZING cycle and runs separately.</p> <p>The Water Reservoir should be removed before starting a HEAT cycle</p>
<p>Interior Emergency Stop Button</p>	<p>Located inside the ZONO™ Cabinet on the back of the door.</p> <p>Pressing this button immediately:</p> <ul style="list-style-type: none"> • Stops the ZONO™ Cabinet from operating. • Stops the generation of ozone. • Begins to destroy existing ozone. • Allows the door to be opened. • Does NOT turn the ZONO™ Cabinet off. See page 12 for details.

<p>Keypad F1 – F5</p>	<p>Located below the Display. Pressing the F1 key on Keypad F1-F5 and then entering the Statistics Password on the Display allows you to determine the number of SANITIZING cycles that have been run.</p> <p>See page 45 for information on statistics.</p>								
<p>Magnetic Door Lock</p>	<p>Prevents the door from being opened during a SANITIZE cycle when the levels of ozone are high inside the ZONO™ Cabinet. It also prevents the door from being opened until the HEAT cycle is complete.</p> <p>Only operational when the ZONO™ Cabinet has electrical power and Power Switch is “on”</p>								
<p>Ozone Sensors</p>	<p>Continuously monitor ozone levels INSIDE and OUTSIDE of the ZONO™ Cabinet during the SANITIZING, and HEAT cycle when Power Switch is “on”</p>								
<p>Plug and Receptacle</p>	<p>The SC1 3D and SC1 3D WH must be securely plugged into a grounded 120V NEMA 5-20R outlet with a dedicated 20 AMP circuit.</p> <table border="1" data-bbox="553 743 1484 930"> <thead> <tr> <th>Model</th> <th>Voltage</th> <th>Plug</th> <th>Receptacle</th> </tr> </thead> <tbody> <tr> <td>SC1 3D SC1 3D WH</td> <td>120V</td> <td>NEMA 5-20P</td> <td>NEMA 5-20R on a Dedicated 20A circuit</td> </tr> </tbody> </table>	Model	Voltage	Plug	Receptacle	SC1 3D SC1 3D WH	120V	NEMA 5-20P	NEMA 5-20R on a Dedicated 20A circuit
Model	Voltage	Plug	Receptacle						
SC1 3D SC1 3D WH	120V	NEMA 5-20P	NEMA 5-20R on a Dedicated 20A circuit						
<p>Power Switch</p>	<p>Immediately turns electrical power to the ZONO™ Cabinet “on” and “off.”</p> <p>Located on the upper front right corner of the machine.</p> <p>If you turn the Power Switch on:</p> <ul style="list-style-type: none"> • The ZONO™ Cabinet will operate and the door can be locked. • SANITIZING or HEAT cycle can be started. • Ozone Sensors work and the ozone can be destructed. <p>If you turn the Power Switch off:</p> <ul style="list-style-type: none"> • The ZONO™ CABINET will not operate and the door will be unlocked. • Any destruction of ozone will be significantly slowed. • The Ozone Sensors will not work 								
<p>Statistics Password</p>	<p>You must enter the Statistics Password after pressing Key F1 on Keypad F1-F5 to see the number of completed SANITIZING cycles. See page 45 for instructions. The Statistics Password is always 100 and cannot be changed.</p>								
<p>Water Reservoir and Humidification</p>	<p>Water Reservoir should be filled with distilled water. The Water Reservoir is used when the ZONO™ CABINET is running a SANITIZING cycle. The Water Reservoir should be removed before starting a HEAT cycle. The Water Reservoir is part of the Humidification process needed to sanitize properly.</p>								

3. Ozone Safety Information

The ZONO™ Cabinet provides the benefits of ozone gas sanitizing in a safe and effective environment when you follow the instructions in this User Manual.

Ozone has been used as a powerful organic sanitizer since the 1900s. In fact, most bottled water is treated using ozone, and ozonated water is used to treat fruit and vegetables. The ZONO™ Cabinet is based on modern ozone sanitizing technology used in food industries.



For your safety, follow **ALL** instructions in this User Manual to minimize the risk of fire, electric shock, exposure to ozone gas, property damage, personal injury, or loss of life.

Ozone exposure limits and guidance

The U.S. Occupational Safety and Health Administration (OSHA) has established an 8-hour time-weighted average (TWA) limit of 0.1 parts per million (ppm) for worker exposure to ozone. In addition to that 8-hour TWA, California-OSHA has set a short-term exposure limit (STEL) of 0.3 ppm ozone averaged over a 15 minute period. The American Conference of Governmental Industrial Hygienists (ACGIH) recommends a 2-hour TWA limit of 0.2 ppm ozone.

Ozone sensors– The Ozone Sensors only work when the ZONO Cabinet is Powered ON!

For the ZONO™ Cabinet to sanitize items, the ozone levels **INSIDE** the ZONO™ Cabinet must be significantly higher than the legal and guidance limits for worker exposure. The ZONO™ Cabinet is carefully designed to prevent human exposure to ozone. The cabinet door magnetic lock activates before the ZONO™ Cabinet generates any ozone, the seals on the ZONO™ Cabinet are designed to retain/trap the ozone produced in the cabinet, and the produced ozone is converted to oxygen before the **Magnetic Door Lock** is released.

As a precaution, the ZONO™ Cabinet's **Ozone Sensors** continuously monitor the ozone levels both **INSIDE** and **OUTSIDE** the cabinet. In the unlikely event the outside sensor is activated, the ZONO™ Cabinet will stop producing ozone and begin destructing it. While that situation needs to be investigated to ensure there is no problem with the ZONO™ Cabinet, the most likely explanation is that the sensor picked up some other chemical that it cannot distinguish from ozone.

DO NOT INHALE OZONE GAS!



Short-term inhalation of high ozone concentrations, and long-term inhalation of low ozone concentrations, can cause serious harmful physiological effects.

Smell Ozone? Turn the **Power Switch** to OFF or unplug the ZONO™ Cabinet. Call ZONOsanitech™ immediately.

Color and odor

Ozone is a colorless gas. The characteristic odor is often described as similar to the smell of electrical sparks or the fresh scent after a thunderstorm or heavy rain.

Effects of short-term, low exposure

Short-term low exposure to ozone can cause any of the following temporary effects: headaches, sore throats, and irritation in the eyes and nose.

4. Heat Safety Information

This information applies to ZONO™ Cabinet models with the **Heat Unit** option:

- **SC Single Door Triple Deep With Heat (SC 1 3D WH)**

The HEAT cycle kills lice, bed bugs and their eggs. Do **NOT** use the HEAT cycle for any other reason. The ZONO™ Cabinet does **NOT** sanitize or disinfect using the HEAT cycle.

Outside cabinet temperature

During the HEAT cycle, the temperature of the outside surface of the cabinet will rise, but the temperature will not exceed the ASTM C1055 recommendation, which calls for the exterior of devices to remain at or below 140°F degrees.



Do not lean against the ZONO™ Cabinet during the HEAT cycle.

Please note that unit may take up to 2 hours to cool down after heat cycle

Inside cabinet temperature

The temperature inside the ZONO™ Cabinet may reach 150°F degrees during a HEAT cycle.

Make sure that any objects placed within the cabinet can withstand this temperature. See pages 31 and 32 for items acceptable and unacceptable for the HEAT cycle.



Do **NOT** run any potentially flammable items, such as paint, markers, items containing chemicals, etc. through a HEAT cycle.

Remove Water Reservoir

The **Water Reservoir** **MUST** be removed before operating a HEAT cycle.



Do **NOT** run a HEAT cycle with the Water Reservoir in the cabinet!

5. Installation and Leveling

The ZONO™ Cabinet should be placed in a location described in the “Installation Location” below. Please see page 9 for instructions on how to level the ZONO™ Cabinet. Call ZONOsanitech™ if you have questions regarding leveling of the ZONO™ Cabinet at 770-212-9201, ext. 3. The ZONO™ cabinet must be installed in accordance with these instructions.



Upon delivery, fully inspect your ZONO™ Cabinet for any damage. Do **NOT** sign to receive your ZONO™ Cabinet if you have any unaddressed concerns about its condition. The shipper must be notified of any exceptions within 48 hours of delivery.

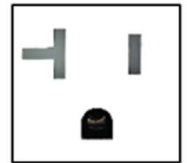
Take care when unpacking, moving, and leveling the cabinet. It contains light bulbs and electronic components that may break or be damaged if dropped, jolted, turned over, or moved incorrectly.

Installation Location

The ZONO™ Cabinet must be installed in a location that:

- **For the SC 1 3D WH models:** Has a grounded 120V NEMA 5-20R outlet with a minimum 20 amps capacity that can be reached without an extension cord.

Model	Voltage	Plug	Receptacle
SC 1 3D SC 1 3D WH	120V	NEMA 5-20P	NEMA 5-20R on a Dedicated 20 A circuit



- Permits the ZONO™ Cabinet to be levelled.
- Can be evacuated for at least 15 minutes, if needed.
- Maintains the ambient temperature around the ZONO™ Cabinet at 70°F ±10°F.

Does **NOT** hide the standard U.S. EPA label on the right side of the cabinet. If this label is not visible after installation, tear off the back page of this User Manual and temporarily tape it on your ZONO™ Cabinet where it can be clearly seen. Call 770-212-9201 Ext 3 to request a new permanent U.S. EPA label which must be affixed to the exterior of the ZONO™ Cabinet where it is visible.

- Is **NOT** used to store volatile organic compounds (VOCs) such as paints, alcohol swabs, paint thinner, etc. The external ozone sensor can be falsely triggered by VOCs.
- Provides enough power for the ZONO™ Cabinet to run on.

Model	SANITIZING Cycle Max Power	HEAT Cycle Max Power
SC 1 3D	400 Watts	N/A
SC 1 3D WH	400 Watts	1920 Watts

- Does **NOT** hide the serial number of the ZONO™ Cabinet. The serial number of the cabinet is located on the upper right side of the cabinet.
- Is **NOT** in proximity to a printer or photocopier. Some printers and photocopiers generate ozone.
- Does **ALLOW** a minimum clearance distance as instructed by the correct installation diagram for the ZONO™ Cabinet.



Do **NOT** store items on top of the ZONO™ Cabinet. An ozone sensor is located at the top of the cabinet which monitors air quality outside the ZONO™ Cabinet.

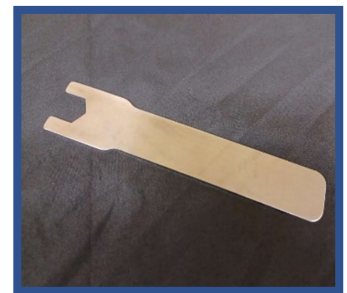
A label required by the EPA is affixed to the right side of the cabinet. If this label is not visible after installation, see the instructions above.

Do **NOT** remove any labeling on the ZONO™ Cabinet!

6. Level the ZONO™ Cabinet

Adjust the 6 feet located at the bottom of the cabinet using the ZONO™-WRENCH provided. These feet can be raised or lowered by turning the adjustment nut.

- Place the wrench completely on the nut before turning to avoid damage.
- Turn clockwise to raise the corner of the cabinet away from the floor.
- Turn counterclockwise to lower the corner of the cabinet toward the floor.
- Use the ZONO™-WRENCH to extend all feet until they touch the floor.



Adjustment nut alone	ZONO™-WRENCH partly on nut	ZONO™-WRENCH completely on nut
		

Familiarize Yourself With the ZONO™ Cabinet

The instructions in this User Manual will be easier to follow if you know where to find the following controls:

Power Switch

The **Power Switch** has two positions: **ON** and **OFF**.

You should leave the **Power Switch** in the **ON** position at all times, unless directed to switch to the **OFF** position by the **Display** or this User Manual.

If you switch to the **OFF** position, the sensors may need to warm up before you can run a cycle. See Section 8 (Initial Startup).



The Power Switch is located on the upper right side of the cabinet.



When the **Power Switch** is **OFF**, the **Magnetic Door Lock** does not work, the **Ozone Sensors** do not work, and the ZONO™ Cabinet cannot destroy ozone in the cabinet.

The door may be opened even if the ozone levels inside the ZONO™ Cabinet are unsafe.

Display

The **Display** is a touch screen that shows the current status of the ZONO™ Cabinet. It allows you to enter the **Access Code** and to control the operations of the ZONO™ Cabinet. It is located near the top of the door, at a height easily visible to adults.

It also includes a **Keypad** with five keys, labeled F1 through F5. These keys are not used for operating the ZONO™ Cabinet, but for determining the number of SANITIZING cycles run as described in Statistics section.

Color meaning

The color of the screen shows the condition of the **Magnetic Door Lock**:

- **GREEN** = Locked **RED** = Unlocked

The **Display** is located on the front of the cabinet.



Door Open Notification

The ZONO™ Cabinet should be ALWAYS locked (unless items are being loaded or unloaded. A “beep” will sound if the door to the ZONO™ Cabinet is unlocked for 5 minutes or more. To lock the doors, follow the instructions on Page 37 (Run a Cycle and Lock the Door).

Exterior Emergency Stop Button

When the **RED** Button is pressed:

- the doors unlock.
- the ozone destructor operates.
- you will hear the fan running even if there is no ozone inside the cabinet

The doors can be opened from either inside or outside of the ZONO™ Cabinet.

Location

The **Exterior Emergency Stop Button** is located on the front below the **Display**.



When the **Exterior Emergency Stop Button** is pressed, the door may be opened even if the ozone levels inside the ZONO™ Cabinet are unsafe.

Interior Emergency Stop Button

When the **RED** button is pressed:

- the doors unlock.
- the ozone destructor operates.
- You will hear the fan running even if there is not ozone inside the cabinet.

Location

The **Interior Emergency Stop Button** is located inside the ZONO™ Cabinet on the back of the door.

Interior Emergency Stop Button



When the **Interior Emergency Stop Button** is pressed, the door may be opened even if the ozone levels inside the ZONO™ Cabinet are unsafe.

Green Button

Pushing the **Green Button** located on the bottom of the **Engine** inside the ZONO™ Cabinet prepares the ZONO™ Cabinet to start a cycle or lock the door. You must close the door and choose a cycle using the **Display** within 30 seconds of pressing the **Green Button**. If you do not make a selection within the 30 seconds you will be directed to start over.

Location

The **Green Button** is located inside the ZONO™ Cabinet on the bottom of the **Engine**.

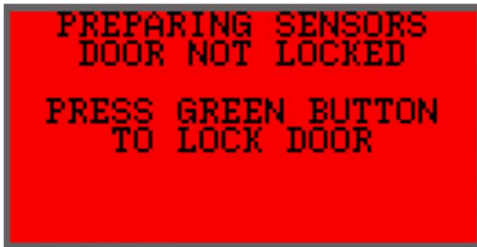


7. Initial Startup

1. For your safety and the safety of others, before beginning the initial startup of the ZONO™ Cabinet, read the entire User Manual and follow the instructions.
2. Turn the **Power Switch** to the **ON** position to begin the sensor preparation, which may take up to 6 hours.

3. Is the **Display** background color **RED** and does it say:
 - YES – Proceed to Step 4.

NO – Check for these possible reasons and correct any that you find.



Is the **Plug** in the correct outlet? Please refer to Section 5 Assembly, Installation and Leveling for a table with the correct plug and receptacle for your ZONO™ Cabinet model.

Is the **Power Switch** in the **ON** position?

Has the circuit breaker in the building's main electrical box been tripped?

If the **Display** is still not **RED**, call ZONOsanitech™.

4. The sensor preparation has started. It is the best practice to lock the ZONO™ Cabinet door during this preparation time. To lock the door, open the door of the ZONO™ Cabinet and push the **Green Button** located on the bottom of the **Engine**. Make sure there is not a person or items inside the ZONO™ Cabinet.



For your safety and the safety of others, READ THE INSTRUCTIONS IN THIS MANUAL BEFORE PERFORMING THE INITIAL STARTUP.

5. Once the **Green Button** is pushed, the **Display** will still be **RED** and will be shown below. Press the numbers of your **Access Code** and then press enter.



6. After the **Access Code** is entered, the **Display** will still be in **RED** and will be shown as below:

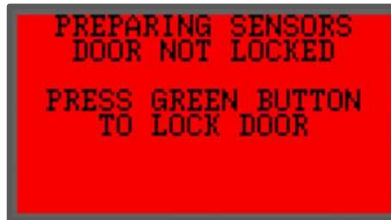


7. Press “Lock Door.”

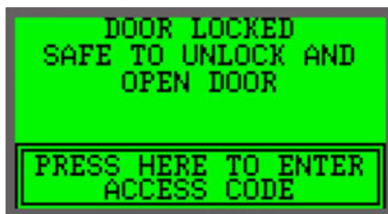
When you select “Lock Door” the **Display** will turn **GREEN** to indicate the door is locked. The **Display** will say:



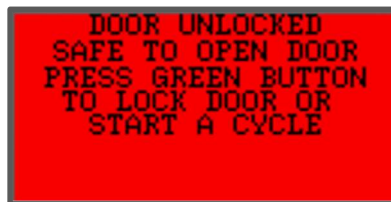
If you do not lock the door to the ZONO™ Cabinet, the **Display** will remain **RED** while the sensors are being prepared and the **Display** will say:



8. When the door is locked and the sensors have been warmed up, the **Display** will remain **GREEN** and say:



If the door was not locked, and the sensors have been warmed up, the **Display** will be **RED** and say:



Both Displays indicate that the sensors are warmed up and you can proceed to step 9 to place the **Water Reservoir** into ZONO™ Cabinet.



The ZONO™ Cabinet must complete the sensor preparation before starting a SANITIZING cycle.
Always keep the door of the ZONO™ Cabinet locked unless you are loading or unloading.

- Add distilled water up to the fill line in the **Water Reservoir**.
Using distilled water ensures that there will be no mineral build up on the **Water Reservoir**. Mineral build up can cause deposits of oxidation inside the ZONO™ Cabinet.
Note: Remove any tape or packaging prior to use.

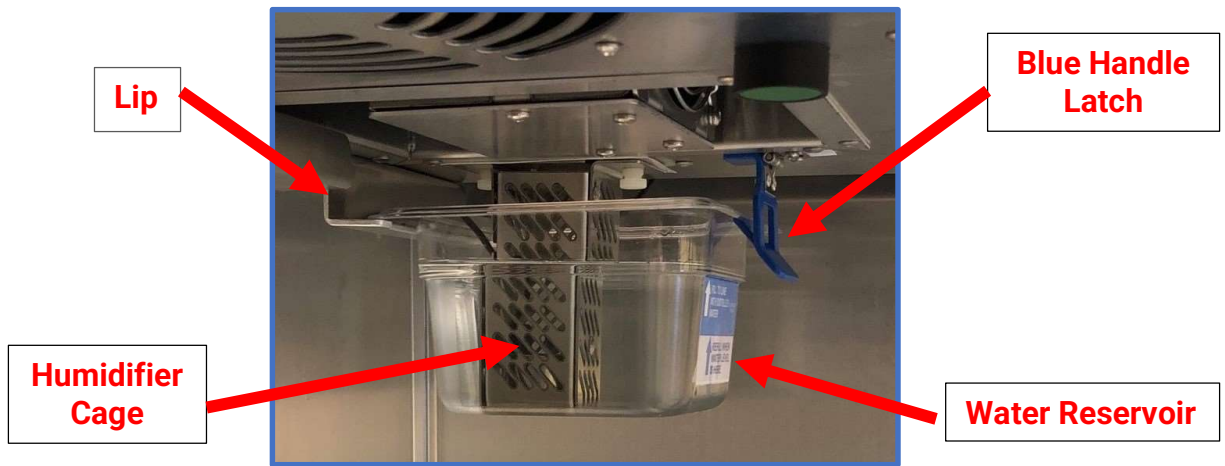


Water Reservoir

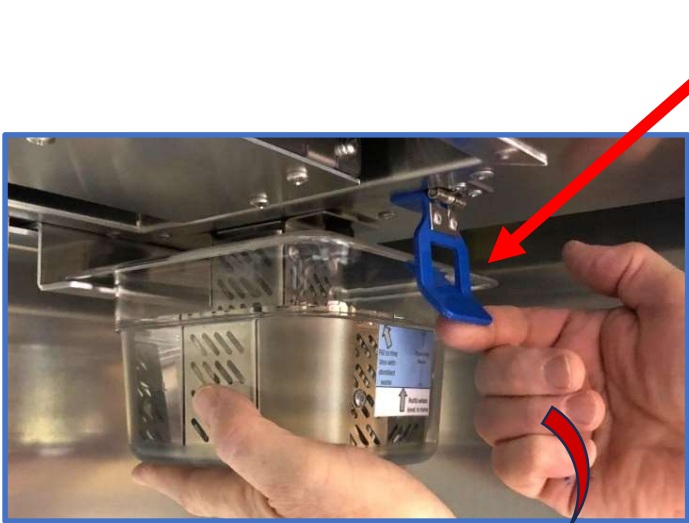
Fill Line

To Install Water Reservoir

Center **Water Reservoir** around humidifier cage and rest rear lip of **Reservoir** on lip in cabinet and rotate **Reservoir** upward until blue handle latch snaps into place underneath.



- To remove the **Water Reservoir** to refill, support the reservoir underneath and simply push **Blue Handle Latch** upwards and rotate reservoir downward. It is normal for some water droplets to fall from humidifier cage when removing the reservoir.



Push upward to release.

Rotate Downward

If ZONO™ Cabinet will not be used for more than 1 week, drain the water reservoir and wash with soapy water and air dry thoroughly. When the ZONO™ Cabinet is used after the idle period, add distilled water to the "Fill" line.

Use the ZONO™ Cabinet.

The following sections describe how to use the ZONO™ Cabinet to run SANITIZING and HEAT cycles.



The F1 – F5 keys are not used to operate the ZONO™ Cabinet.
They are used when running statistics on SANITIZING cycles.



Before operating the ZONO™ Cabinet, make sure that you have:
Installed the ZONO™ Cabinet correctly.
Read and followed the Initial Startup instructions.

General safety guidelines

See the information below and on the next page for important rules on using the ZONO™ Cabinet.

DO NOT

- Allow children to operate or play near the ZONO™ Cabinet.
- Open the door to the ZONO™ Cabinet while it is operating unless a person is inside.
- Allow a person or animal inside the ZONO™ Cabinet.
- Use an extension cord to power the ZONO™ Cabinet.
- Cover any vents, holes, or passages in the ZONO™ Cabinet.
- Put anything other than distilled water in the **Water Reservoir**.
- Share your **Access Code or Statistics Password** with anyone who has not read this User Manual.
- Climb, sit, lean, hang, or stand on the ZONO™ Cabinet.
- Put items on top of the ZONO™ Cabinet or use it for storage.
- Conduct any maintenance on or repair the ZONO™ Cabinet, except as described in the General Care Instructions and Maintenance sections.



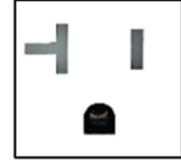
Smell ozone?
Turn the **Power Switch** to OFF or unplug the
ZONO™ Cabinet if you smell ozone.
Call ZONOsanitech™ immediately.

DO

- Check that no one is inside the ZONO™ Cabinet before locking the door or starting a cycle.

Only plug the ZONO™ **SC 1 3D**, **SC 1 3D WH** into a grounded 120V NEMA 5-20R circuit with a minimum capacity of 20 amps.

Model	Voltage	Plug	Receptacle
SC 1 3D SC 1 3D WH	120V	NEMA 5-20P	NEMA 5-20R on a Dedicated circuit



- Keep the door locked at all times when the ZONO™ Cabinet is not being loaded or unloaded. The **Display** is **GREEN** when the door is locked.
- Follow the instructions in these sections of the User Manual before starting a cycle:



At the initial startup of the ZONO™ Cabinet and when the ZONO™ Cabinet has been powered "OFF" or lost electricity, the sensors may need to warm up before a cycle can be started. See Section 7 (Initial Startup).

Choose items for the SANITIZING Cycle

The following tables provide examples of what **CAN** and **CANNOT** be placed in the ZONO™ Cabinet for sanitization for various industries. These examples are not a comprehensive list of all acceptable items for the SANITIZING cycle.

If you have a question about whether an item can be sanitized, call ZONOsanitech™.


Acceptable items for the SANITIZING Cycle

Items	Loading Method
A variety of plastic, glass, fabric, paper, leather, metal, and varnished wood items.	Various carts
Paper and cardboard products, including books and clipboards, art supplies (crayons, markers, glue bottles and sticks, scissors, paintbrushes, easels, dry erase and chalk boards)	Utility Cart and Tray Cart
Electronics including iPads/tablets, laptops, telephones, cellular phones, computer keyboards, mice, headphones, musical instruments, electronics with batteries	
Sports: Helmets, shoulder pads and other protective pads, cleats, shoes, balls, gloves/mitts, braces, knee pads, duffel bags	Helmet Cart, Pad Cart, Shoe Dryer, and Utility Cart
Gym: Weights, foam rollers, yoga mats, exercise balls	Utility Cart and Tray Cart
Wheelchairs, walkers, canes, and other exempt Class 1 medical devices	Utility Cart and Floor

Childcare: Toys, dolls, stuffed animals, games, plush items, soft and hard blocks, stuffed animals, books, play food and kitchen accessories, covers, puppets, Lego® pieces, plastic figures, play dough, puzzle pieces, lacing cards, rattles, classroom chairs, tables, bookcases, baskets, containers, activity centers, doll houses, bead tables, mirrors, rocking toys, storage bins, crib mobiles, soft foam furniture, rugs, step stools, walkers, exercisers, bouncy seats, hats, dress-up clothes, costumes, pillows, cushions, blankets, rest mats, cots, crib mattresses, activity mats.	Tray Cart
Industrial and Public Safety: Workwear, fabric and insulated garments, safety vests, coveralls, coats, jackets, public safety vests, hats, hard hats, shoes, boots, cleats, safety boots, gloves, face shields, earmuffs	Utility Cart and Garment Cart
Mops with no chemicals on them, brooms, buckets, etc.	Utility Cart and Floor

Unacceptable items for the SANITIZING cycle

Items	Unacceptable because
Humans or animals	Ozone exposure is potentially lethal.
FDA non-exempt Medical Devices	The ZONO™ Cabinet is ONLY approved as a sanitizer/disinfectant for exempt Class 1 medical devices.
Chemicals or any items that contain any chemicals	Ozone and/or heat can cause chemicals to react dangerously. Chemicals can also cause inaccurate ozone readings by the sensors and/or damage the Ozone Sensors .
Food, beverages, plates, cups, eating utensils	The ZONO™ Cabinet sanitizes items, but it does not remove dirt, food, residue, etc. The ZONO™ Cabinet is NOT certified for use in food preparation.
Natural rubber products	Ozone breaks down natural rubber in a process called “ozone cracking.” If in doubt about the composition of an item, check the manufacturer’s label.

 The ZONO™ Cabinet does not remove dirt from items.

Choose items for the HEAT Cycle

The following tables provide examples from various industries of what **CAN** and **CANNOT** be placed in the ZONO™ Cabinet for the HEAT cycle to kill lice, bed bugs and their eggs, but they are not a comprehensive list of all possibilities for the HEAT cycle.



The temperature inside the ZONO™ Cabinet during the HEAT cycle reaches 150°F degrees. Items that cannot withstand this temperature may be destroyed.

Items that can be heated in the HEAT cycle may not be acceptable for the SANITIZING cycle and vice-versa.

For questions about whether an item can be treated in the HEAT cycle, call ZONOsanitech™.

Acceptable items for the HEAT cycle

Items	Loading Method
A variety of fabric, glass, paper, leather, metal, rubber, and varnished wood items that can withstand 150°F degrees used in multiple industries.	Various carts
Childcare: Items with <u>organic</u> stuffing like pillows, cushions, bean bags, plush items and stuffed animals or soft blocks, fabric puppets, soft foam furniture, rugs, fabric hats, fabric dress-up clothes and costumes, pillows, cushions, blankets, non-plastic rest mats, cots, crib mattresses	Tray Cart
Industrial and Public Safety: Workwear, fabric and insulated garments, safety vests, coveralls, coats, jackets, public safety vests, hats, hard hats, shoes, boots, cleats, safety boots, gloves, face shields, earmuffs	Utility Cart and Garment Cart
Sports: Helmets, shoulder and other protective pads, cleats, shoes, sports equipment, protective padding, knee pads, duffel bags	Helmet Cart, Pad Cart, Shoe Dryer, and Utility Cart

Unacceptable items for the HEAT cycle

Any items that cannot withstand 150°F degrees may be destroyed during the HEAT cycle. This includes any items made of plastic or that contain waxes or chemicals.

Items	Unacceptable because
Humans or animals	Heat exposure is potentially lethal.
A variety of glass, fabric, paper, leather, metal, rubber and varnished wood items that cannot withstand 150°F degrees in multiple industries.	Melting risk.
Plastic items or items that contain wax	Melting risk.
Items with <u>non-organic</u> stuffing like stuffed animals, bean bag pillows, cushions	Non-organic fill material may melt even if the outside cover can withstand the heat inside the ZONO™.

<p>Childcare: Play Dough, plastic toys: Including toys, dolls, games, plastic blocks, play food and kitchen accessories, Lego® pieces, plastic figures, puzzle pieces, rattles.</p> <p>Classroom chairs, tables, bookcases, baskets, containers, activity centers, doll houses, bead tables, etc. made from or containing plastic or non-organic fill.</p> <p>Exercisers or bouncy seats with plastic parts.</p>	Melting risk.
Chemicals or Items that may contain any chemicals	Heat can cause chemicals to react dangerously
Electronics including iPads/tablets, laptops, telephones, cellular phones, computer keyboards, mice, musical instruments, electronic toys with batteries, and cell phones	<p>Melting risk.</p> <p>Electronic displays may “craze” when exposed to heat.</p>
Gym: Plastic covered weights, foam rollers, yoga mats, exercise balls	Melting risk.
Art Supplies (crayons, markers, glue bottles and sticks, scissors, paint brushes, easels, dry erase and chalk boards).	<p>Melting risk.</p> <p>Some art supplies contain volatile chemicals that should not be exposed to heat. Chemicals can also damage the ozone sensor and cause inaccurate ozone readings by the sensors.</p>
Mops, brooms, buckets made of plastic, either entirely or in part (handles).	Melting risk.
<p>The ZONO™ Cabinet does not sanitize or disinfect using the HEAT cycle.</p>	

Load items into the ZONO™ Cabinet

This section describes how to load items typically found in a child care center in the Trays and Carts shown below.




For instructions on how to load items used in other industries in the trays and carts designed for them, see the industry specific addendum available upon purchase of those items.

Your ZONO™ system may include Trays, Tray Carts, that can be used in the SANITIZING and HEAT cycles. These Accessories will enable you to maximize the number of items you can treat at one time and will ensure the proper air-flow between the items.

Load Tray Cart

The Trays provided with your ZONO™ do not require assembly.

Place items flat on the Trays. Do **NOT** stack or pile items on top of one another.

Examples		
CORRECT	CORRECT	INCORRECT
		



Do **NOT** stack or pile items on top of one another.

Without air flow, items will not be effectively sanitized.

Tray Cart assembly instructions are provided in the box containing the Tray Cart parts.

1. The Tray Cart holds between seven (7) and nine (9) Trays (depending on the height of the Tray Cart) with the Tray Slides shown below at their normal positions. You can adjust the Tray Slides to allow more space if you have loaded larger / taller items in the Trays.

Adjustable Tray Slides



2. Load the Trays with items laid flat. Make sure the items don't stand so high that the Tray won't fit into the Tray Cart.
3. Slide a Tray into the first Tray Slides.
4. Repeat with remaining Trays.



You can stack larger items in a Tray, as long as you can still slide it into the Tray Cart.

When the Zono™ Cabinet is being used with mattresses, please follow the following instructions.

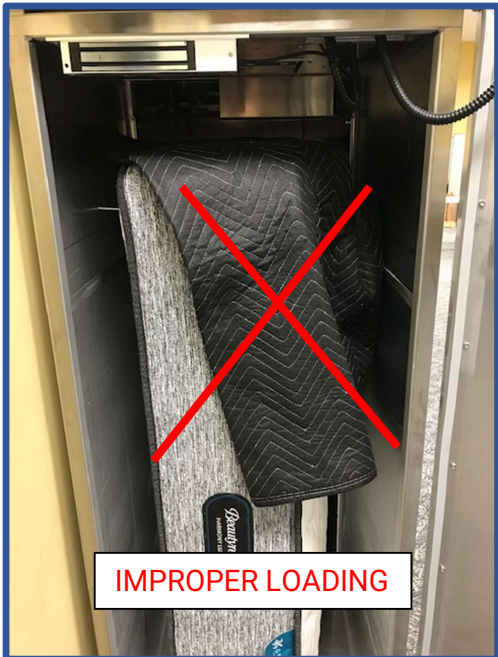


Place mattress on top of the speed bump at rear of cabinet for proper air flow.

Add spacer to top of mattress to prevent mattress from leaning against walls of cabinet.

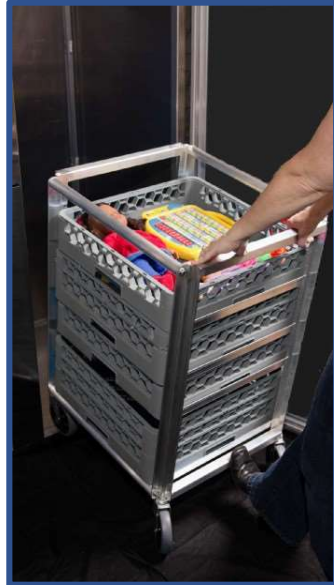


Do not place items on top of mattress during the SANITIZING or HEAT cycles.



To Load Carts into ZONO™ Cabinet

1. Place one foot at the base of the Cart and pull back gently to raise the front wheels off the ground.
2. Push the cart over the bottom edge of the opening of the door and into the ZONO™ Cabinet.



Hang items and load large or bulky items

You can hang or drape items on the Tray Cart, if air can flow between all items in the ZONO™ Cabinet.

- Use hangers or clips on the Tray Cart to hold clothes, hats, stuffed animals and similar items.
- Use hangers with clips on the Tray Cart to hold books, spreading the pages like a fan to allow air to flow between them.
- Drape blankets, sleeping bags, or other items on an unloaded Tray Cart.

Leave the top rack of the Tray Cart empty, and place large items, like bean bag chairs, on top of the Tray Cart after rolling the cart into the ZONO™ Cabinet.

Remember to remove the large item before rolling the Tray Cart out of the ZONO™ Cabinet. Never roll the Tray Cart in or out of the ZONO™ Cabinet with an item loaded on top.

You can also place a Tray upside down on the floor of the ZONO™ Cabinet and place a large item on top of it. The Tray allows for proper airflow below the item.

If the item already sits off the ground, like a bouncy seat, you can place it on the floor of the ZONO™ Cabinet because air can still flow beneath it.



Don't load items higher than the top of the Tray Cart. Doing so can inhibit loading the Tray Cart into the ZONO™ Cabinet or cause it to tip over.

Run a Cycle and Lock the Door

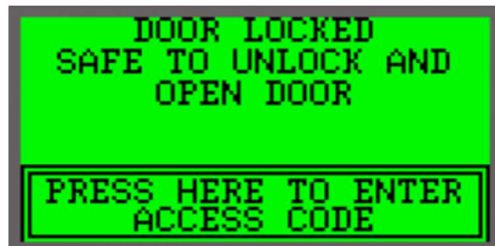
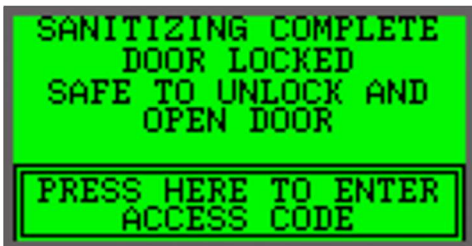
Cycle	Time to complete
SANITIZING	40 minutes (Low humidity or dense items in cabinet may increase sanitizing time.)
HEAT	120 minutes

1. Make sure the **Power Switch** is **ON**.
2. What color is the **Display**?
 - **GREEN** – Go to Step 3.
 - **RED** – Go to Step 6.
 - **BLANK** – The ZONO™ Cabinet is not powered on. See Initial Startup.



The ZONO™ Cabinet ozone sensors must be warmed up before a cycle can be started during the Initial Startup.

3. **GREEN** background: What words does the **Display** message include?
 - **Door Locked Safe To Unlock And Open Door**– Go to Step 4.



- **Door Locked – Not Safe To Unlock And Open Door**– Wait until the current cycle finishes before starting a new one.

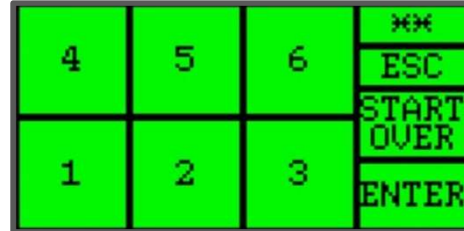


- **Any Other Message with a GREEN Background**- See Page 29 (Section 8. Additional Display Messages) or Page 36 (Section 9. Troubleshooting Messages).



NEVER interrupt a cycle unless a person is inside the ZONO™ Cabinet. Opening the door before a SANITIZING cycle is finished will release ozone.

4. Touch the **Press Here To Enter Access Code** text on the Display.

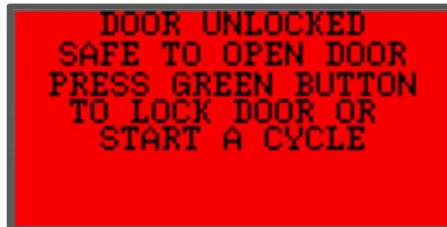


5. Touch the numbers of your **Access Code 1,3,6,4** on the **Display**, then press **ENTER**. The box in the upper right corner shows one asterisk * for every number you press.

START OVER – Clears your current entries.

ESC – Goes back to the previous screen on the **Display**.

5. If the door is already unlocked or if you entered the **Access Code** correctly, the **Display** reads **Door Unlocked – Safe To Open Door – Press Green Button To Lock Door or Start a Cycle** on a **RED** background, as shown in the example below.



Any Other Message with a RED background- See Page 29 (Section 9. Additional Display Messages) or Page 36 (Section 10. Troubleshooting Messages).

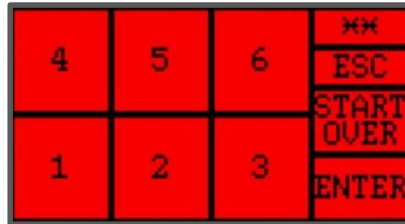
6. Open the door and load items into the ZONO™ Cabinet. See pages 20-23 for guidance on loading the ZONO™ Cabinet or the Addendum to the User Manual that has loading instructions for industry specific carts applicable for your use.
7. Verify that there are no humans or animals inside the ZONO™ Cabinet.
8. Reach inside the ZONO™ Cabinet and push the **Green Button**. See page 12 for information on the location of this button. If you do not start a cycle or lock the doors within 30 seconds of pressing the **Green Button**, you will be prompted to start over.
9. Close the door.



NEVER push the **Green Button** if there are people or animals inside the ZONO™ Cabinet.



10. The **Display** should still be **RED**. Press the numbers of your **Access Code 1364** then press **ENTER**.



11. Choose the appropriate command on the **Display**:

Command	Use to
Lock Door	<p>Lock the Magnetic Safety Doors without starting a cycle.</p> <p>The Display turns GREEN and reads Door Locked – Safe to Unlock And Open Door.</p> <p>You may want to use this command if you have not fully loaded the ZONO™ Cabinet yet or want to run a cycle at a later time.</p> <p>ALWAYS lock the door when you are not actively loading or unloading the ZONO™ Cabinet. The ZONO™ Cabinet “beeps” if the door is not locked for 10 minutes.</p>
Start SANITIZING cycle	Run a cycle that only has ozone sanitization and does NOT generate heat.
Start a HEAT cycle	Run a cycle that heats the interior but does NOT generate ozone. Always remove water reservoir prior to starting a HEAT cycle.



If you don't press a command within 30 seconds of pushing the **Green Button**, the **Display** reverts to Step 6.

12. **HEAT Cycle Only:** The **Display** reminds you that the temperature inside the ZONO™ Cabinet exceeds 150° F Within 30 seconds press “OK.”



If you don't press OK to acknowledge the warnings within 30 seconds the door(s) will remain unlocked, and the HEAT Cycle will be cancelled.

The **Display** will then remind you to remove the **Water Reservoir before running** a HEAT cycle. Within 30 seconds, press **OK** and then remove the **Water Reservoir** per the instructions. For more information on the **Water Reservoir**, see Section 7 (Initial Startup, page 13).



13. The cycle begins. The **Display** shows the current status:



14. The **Display** notifies you when the cycle is complete. The background will be **GREEN** and the text will include all of these statements:

- Complete - Door Locked - Safe To Unlock and Open Door

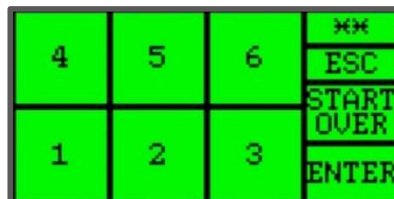


15. The **Display** should be **GREEN**. Enter the **Access Code 1364** again to unlock the doors.

16. Remove the items from the ZONO™ Cabinet.

17. Close the doors.

18. Press the Green Button and enter your **Access Code 1364** to lock the door **BEFORE** walking away from the ZONO™ Cabinet.



What to do if the ZONO™ Cabinet loses power

This situation occurs if the electrical cord is unplugged, your building loses power, or if the **Power Switch** is turned to OFF by mistake.

1. Do **NOT** open the door. Without power, the **Magnetic Door Lock** does not work, and the door can be opened even if there are high levels of ozone inside the cabinet.
2. Plug the electrical cord back into the outlet or set the **Power Switch** to **ON**. If all power to your building has been lost, wait until it is restored.
3. Wait 15 minutes to allow any ozone inside the ZONO™ Cabinet to revert to oxygen before opening the door.
4. Assume items were **NOT** sanitized or the HEAT cycle was not successful.
5. If the ZONO™ Cabinet has no electricity or is powered “off,” the sensors may require warming up before a cycle is started. If that is necessary, when the ZONO™ Cabinet has power again, the Display will say: **Preparing Sensors – Door Not Locked – Press Green Button To Lock Door**. See **Initial Startup** and follow the instructions to lock the door of the ZONO™ Cabinet while the ozone sensors warm up.

When the sensors are warmed up, the **Display** will say: **Door Unlocked – Safe to Open Door – Press Green Button to Lock Door or Start a Cycle**. You can start a cycle or lock the door. The best practice is to keep the door locked when you are not loading or unloading.



If you leave the ZONO™ Cabinet unattended after a power outage, make sure the door will not be opened for at least 15 minutes.

8. Additional Display Messages

In addition to the normal operating messages, you may see the following messages when unloading, loading, and running the ZONO™ Cabinet. The meaning of these messages is explained in the following pages. These messages can also be resolved by the user.

Emergency Stop Button Pressed – Door Unlocked – Safe To Open Door – Twist Red Buttons On Inside Or Outside Of Door To Reset

Either the **Interior Emergency Stop Button** or **Exterior Emergency Stop Button** was pressed. The stop may have been pressed by mistake or on purpose.

Corrective Action
1. Do NOT turn the Power Switch to “off.”
2. The door is NOT locked and can be opened safely from either the inside or outside of the ZONO™ Cabinet.
3. Open the door. Remove the any items or any person from inside the ZONO™ Cabinet.
4. Twist the Interior or Exterior Emergency Stop Button of the ZONO™ Cabinet to reset the ZONO™ Cabinet and start a cycle or lock the door.
5. The error message will remain until the Emergency Stop Button is reset. Always keep the door to the ZONO™ Cabinet locked when you are not loading or unloading.

Emergency Stop Reset – High Ozone in ZONO™ Cabinet – Not Safe To Open- Door Unlocked – Close Door If Open

Either the **Interior Emergency Stop Button** or **Exterior Emergency Stop Button** was pressed during a SANITIZING cycle. The stop may have been pressed by mistake or on purpose.

Corrective Action
1. Do NOT turn the Power Switch to “off.” The ozone destructor will operate only when the ZONO™ Cabinet is powered “on.” The ozone destructor will operate and you will hear the fan running.
1. The door is NOT locked. If there is a person inside the ZONO™ Cabinet, open the door, remove the person from the ZONO™ Cabinet, then close the door. Evacuate the room for at least 15 minutes and follow the instructions in “Emergency Procedures” on page 41 and follow the instructions in “Suspected or confirmed ozone exposure” and “First Aid Measures” on page 42.
2. If there is NOT a person inside the ZONO™ Cabinet, make sure the door is closed and do NOT open the door because ozone inside the ZONO™ Cabinet is high and you could be exposed to ozone.
3. When it is safe to open the door, the Display will say: Door Unlocked- Safe to Open Door- Press Green Button To Lock Door Or Start A Cycle
4. Assume items are NOT sanitized.
5. Follow the instructions on the Display to start a SANITIZING or HEAT cycle or lock the door. Always keep the door to the ZONO™ Cabinet locked when you are not loading or unloading.

Emergency Stop Button Pressed – High Ozone In ZONO™ Cabinet – Close Door If Open – Not Safe to Open

Either the **Interior Emergency Stop Button** or **Exterior Emergency Stop Button** was pressed during a SANITIZING cycle. The stop may have been pressed by mistake or on purpose.

Corrective Action
1. Do NOT turn the Power Switch to “off.”
2. The door is NOT locked. If there is a person inside the ZONO™ Cabinet, open the door, remove the person from the ZONO™ Cabinet, then close the door. Evacuate the room for at least 15 minutes and follow the instructions in “Emergency Procedures” on page 41 and follow the instructions in “Suspected or Confirmed Ozone Exposure” and “First Aid Measures” on page 42
3. If there is NOT a person inside the ZONO™ Cabinet, make sure the door is closed and do NOT open the door because ozone inside the ZONO™ Cabinet is high and you could be exposed to ozone.
4. When it is safe to open the door, the Display will say: Emergency Stop Button Pressed – Door Unlocked – Safe To Open Door – Twist Red Buttons On Inside Or Outside Of Door To Reset. You may open the door. Remove any items from inside the ZONO™ Cabinet, but assume items were NOT sanitized.
5. Twist the Interior or Exterior Emergency Stop Button of the ZONO™ Cabinet to reset the ZONO™ Cabinet and start a cycle or lock the door. The error message will remain until the Emergency Stop Button is reset.
6. Always keep the door to the ZONO™ Cabinet locked when you are not loading or unloading.

Preparing To Sanitize – Door Locked – Do Not Unlock And Open Door – Display Updates When Cycle Starts

Corrective Action
1. Do NOT turn the Power Switch to “off.” Turning the ZONO™ Cabinet off will stop the ZONO™ Cabinet from preparing to start a cycle.
2. Do NOT unlock and open the door because it will stop the ZONO™ Cabinet from preparing to start a cycle.
3. When the cycle begins, the Display will say: Sanitizing- Door Locked- Not Safe to Unlock and Open Door.

Preparing Sensors – Door Not Locked – Press Green Button To Lock Door

This message will be displayed when the ZONO™ Cabinet is first switched to the “on” position or after the ZONO™ Cabinet has been powered “off” and the door is unlocked. ZONO™ Cabinet is warming up the ozone sensors, which may take up to 6 hours

Corrective Action
1. Do NOT turn the Power Switch to “off.” Turning the ZONO™ Cabinet off will prevent the sensors from warming up, and it will take longer before the SANITIZING cycle can start.
2. It is safe to open the door. The door is NOT locked. Follow instructions on the Display to lock the ZONO™ Cabinet as shown in the Initial Startup on page 13 while the sensors are warming up.
3. When the door is locked the Display will be GREEN and say: Preparing Sensors- Screen Will Update When Ready- Door Locked- Safe to Unlock And Open Door . If you do not lock the door, the Display will continue to remain RED and say: Preparing Sensors – Door Not Locked – Press Green Button To Lock Door . The sensors will warm up whether the door is locked or unlocked, but it is the best practice to always keep the door to the ZONO™ Cabinet locked when you are not loading or unloading. A cycle cannot be started until the warmup is complete.
4. When the sensors are warmed up, if the door is locked the GREEN Display will say: Door Locked – Safe To Unlock And Open Door – Press Here To Enter Access Code . If the door is unlocked, the RED Display will say: Door Unlocked – Safe To Open Door – Press Green Button To Lock Door Or Start A Cycle . If you are still in the initial startup of the ZONO™ Cabinet, follow the instructions in Section 7 (Initial Startup) page 13 to install the Water Reservoir . If you have already completed all steps in Section 7 (Initial Startup) a cycle may be started.
5. Always keep the door to the ZONO™ Cabinet locked when you are not loading or unloading.

Sanitizing Extended – Door Locked – Not Safe To Unlock And Open Door – Display Updates When Cycle Complete

Corrective Action
1. Do NOT turn the Power Switch to “off.” High ozone is still in the ZONO™ Cabinet. The ozone destructor will operate only when the ZONO™ Cabinet is powered “on.” The ozone destructor will operate, and you will hear the fan running.
2. Do NOT unlock and open the door because ozone inside the ZONO™ Cabinet is high and you could be exposed to ozone.
3. When the SANITIZE cycle is complete, the Display will say: Sanitizing Complete – Door Locked – Safe to Unlock And Open Door . Always lock the door of the ZONO™ Cabinet when not unloading and loading.

Preparing Sensors – Screen Will Update When Ready – Door Locked – Safe to Unlock And Open Door

This message will display when the ZONO™ Cabinet is first switched to the “on” position or after the ZONO™ Cabinet has been powered “off” and the door is locked. The ZONO™ Cabinet is warming up the ozone sensors, which may take up to 6 hours.

Corrective Action
1. Do NOT turn the Power Switch to “off.” Turning the ZONO™ Cabinet off will prevent the sensors from warming up, and it will take longer before the SANITIZING cycle can start.
2. It is safe to unlock and open the door by entering the Access Code , however, it is the best practice to always keep the door to the ZONO™ Cabinet locked when you are not loading or unloading. A cycle cannot be started until the warmup is complete.
3. When the sensors are warmed up, the GREEN Display will say: Door Locked- Safe to Unlock and Open Door- Press Here to Enter Access Code . If you are still in the initial startup of the ZONO™ Cabinet, follow the instructions in Section 7 (Initial Startup) page 13 to install the Water Reservoir . If you have already completed all steps in Section 7 (Initial Startup) a cycle may be started.
4. Always keep the door to the ZONO™ Cabinet locked when you are not loading or unloading.

Sanitizing Extended – Door Locked – Safe To Unlock And Open Door

Corrective Action
1. Do NOT turn the Power Switch to “off.”
2. The extended sanitizing has completed. Items are sanitized.
3. It is safe to unlock and open the door by entering the Access Code . Always lock the door of the ZONO™ Cabinet when not unloading and loading.

Heat Cycle Temp High – Door Locked – Do Not Open Door – Cool Down Ongoing

Corrective Action
1. Do NOT turn the Power Switch to “off.”
2. Do NOT unlock and open the door because the temperature inside the ZONO™ Cabinet is high.
3. When the temperature inside the ZONO™ Cabinet reaches the correct level, the Display will say: Heat Cycle Successful- Door Locked- Safe to Unlock And Open Door . Always keep the door to the ZONO™ Cabinet locked when you are not loading or unloading.

Items Not Sanitized – Door Locked – Safe To Unlock And Open Door – Decrease Items In ZONO™ And Restart

This message is on the **Display** when there are too many items in the ZONO™.

Corrective Action
1. Do NOT turn the Power Switch to “off.”
2. It is safe to unlock and open the door. Press the “ Press Here to Reset ” box on the Display to get to the screen to enter the Access Code to open the doors. After the door is opened, the Display will say: Door Unlocked-Safe to Open Door- Press Green Button To Lock Door Or Start A Cycle
3. Items are not sanitized. Remove some items from the ZONO™ Cabinet and restart the SANITIZING cycle.
4. Always lock the door of the ZONO™ Cabinet if you do not restart a SANITIZING cycle

Add Distilled Water To Reservoir – Safe To Unlock & Open Door – Press Emergency Stop Button To Open

Items Not Sanitized – Door Locked – Safe To Unlock & Open Door – Add Distilled Water To Reservoir

These messages are shown on the **Display** when the **Water Reservoir** is low and water needs to be added before the cycle is started.

Corrective Action
1. Do NOT turn the Power Switch to “off.”
2. It is safe to unlock and open the door by pressing the “ Press Here to Reset ” box on the Display to get to the screen to enter the Access Code to open the doors.
3. Remove the Water Reservoir that is located below the engine.
4. Check to see if <u>distilled water</u> is in the Water Reservoir . If there is no <u>distilled water</u> , or if the <u>distilled water</u> does not reach the fill line, add <u>distilled water</u> to the fill line.
5. If, after completing steps 1-5 above, the message reoccurs, call ZONOsanitech™. Always keep the door to the ZONO™ Cabinet locked when you are not loading or unloading.

Door Did Not Lock – Safe To Open Door – Press Exterior Emergency Stop Button To Reset

This message is shown on the **Display** when the door is not latching.

Corrective Action
1. Do NOT turn the Power Switch to “off.”
2. It is safe to open the door.
3. Press and twist the Exterior Emergency Stop Button to reset the ZONO™ Cabinet so that the door can be locked or a cycle can be started. The Display will say: Door Unlocked- Safe To Open Door- Press Green Button To Lock Door Or Start A Cycle . Always lock the door of the ZONO™ Cabinet when not unloading and loading.
4. If, after completing step 3 above, the message reoccurs, call ZONOsanitech™.

Door Not Closed – Safe to Open And Restart Cycle

This message is shown on the **Display** when the door is not latching.

Corrective Action
1. Do NOT turn the Power Switch to “off.”
2. It is safe to open the door.
3. Press the “ Press Here to Reset ” box on the Display to get to the screen enter the Access Code . Once you have entered the Access Code the Display will say: Door Unlocked- Safe To Open Door- Press Green Button To Lock Door Or Start A Cycle . Always lock the door when you are not loading or unloading the ZONO™ Cabinet.
4. If, after completing step 3 above, the message reoccurs, call ZONOsanitech™.

Sanitizing Halted – High Ozone in ZONO™ Cabinet – Not Safe to Unlock and Open Door – Do Not Turn Off ZONO

Corrective Action
1. Do NOT turn the Power Switch to “off.” High ozone is still in the ZONO™ Cabinet. The ozone destructor will operate only when the ZONO™ Cabinet is powered “on.” The ozone destructor will operate, and you will hear the fan running.
2. Do NOT unlock and open the door because ozone inside the ZONO™ Cabinet is high and you could be exposed.
3. When it is safe to open the door, the Display will say: Error- Door Locked- Safe To Unlock And Open Door- Call ZONOsanitech™ And Report Code 104. Always lock the door of the ZONO™ Cabinet when not unloading and loading.
4. Assume items were NOT sanitized.

9. Troubleshooting Messages That Require User to Call ZONOsanitech™

In addition to the normal messages, you will see when loading, unloading and running the ZONO™ Cabinet, the **Display** can show messages that help the user and ZONOsanitech™ to correct the problem: The following require the user to call ZONOsanitech™.

Ozone Detected In Room – Turn Off ZONO Immediately – Leave Room Now – Call ZONOsanitech™

Either ozone or an irritant is present in the room. An Alarm will sound.

Corrective Action
1. Turn the Power Switch to “Off.” Turning the ZONO™ Cabinet off will prevent the ZONO™ Cabinet from continuing to create ozone if it is creating ozone. Do NOT open the door of the ZONO.
2. Exit the Room Where the ZONO™ Cabinet Is Located. Allow at least 15 minutes for any potential ozone to revert to oxygen before reentering the room in which the ZONO™ Cabinet is located.
3. Follow the instructions in “Suspected or confirmed ozone exposure” or “First Aid Measures” on page 42.
4. Call ZONOsanitech™ at 770-212-9201 Ext 3 and report ozone detected in room.
5. Assume items were NOT sanitized.
6. Do NOT use the ZONO™ until told to do so by ZONOsanitech™.

Machine Fault – Not Safe to Unlock And Open Door – Do Not Turn Off ZONO – Call ZONOsanitech™

Corrective Action
1. Do NOT turn the Power Switch to “off.” High ozone is still in the ZONO™ Cabinet. Turning the ZONO™ Cabinet off will prevent the ZONO™ Cabinet from destructing any ozone inside the ZONO™ Cabinet. The ozone destructor will operate, and you will hear the fan running.
2. Do NOT unlock and open the door because ozone is high inside the ZONO™ Cabinet and you could be exposed to ozone.
3. Call ZONOsanitech™ at 770-212-9201 Ext 3 and report machine fault.
4. Assume items were NOT sanitized.
5. Do NOT use the ZONO™ until told to do so by ZONOsanitech™.

Machine Fault – Door Not Locked – Do Not Turn Off ZONO™ – Call ZONOsanitech™ – Do Not Open Door

Corrective Action
1. Do NOT turn the Power Switch to “off.”
2. The door is NOT locked. Do NOT open the door of the ZONO™ Cabinet.
3. Call ZONOsanitech™ at 770-212-9201 Ext 3 and report machine fault.
4. Assume items were NOT sanitized.
5. Do NOT use the ZONO™ until told to do so by ZONOsanitech™.

Sanitizing Extended – Door Locked – Not Safe To Unlock & Open Door – Call ZONOsanitech™ And Report Code 101

Corrective Action
1. Do NOT turn the Power Switch to “off.” Turning the ZONO™ Cabinet off will prevent the ZONO™ Cabinet from destructing the ozone. The ozone destructor will continue to operate, and you will hear the fan running.
2. Do NOT unlock and open door of the ZONO™ Cabinet because ozone inside the ZONO™ Cabinet is high and you could be exposed to ozone.
3. Call ZONOsanitech™ at 770-212-9201 Ext 3 and report code 101.
4. Assume items were NOT sanitized.
5. Do NOT use the ZONO until told to do so by ZONOsanitech™.
6. When it is safe to open the door, the Display will say: Sanitizing Extended – Door Locked – Safe To Unlock And Open Door – Call ZONOsanitech™ And Report Code 101 . Always keep the door to the ZONO™ Cabinet locked when you are not loading or unloading the ZONO™ Cabinet.

Sanitizing Extended – Door Locked – Safe To Unlock & Open Door – Call ZONOsanitech™ And Report Code 101

Corrective Action
1. Do NOT turn the Power Switch to “off.”
2. It is safe to unlock and open the door by entering the Access Code and remove items. Always lock the door of the ZONO™ Cabinet when not unloading and loading.
3. Call ZONOsanitech™ at 770-212-9201 Ext 3 and report code 101. Items were sanitized.
4. Do NOT use the ZONO™ Cabinet until told to do so by ZONOsanitech™.

Items Sanitized – Door Locked – Safe To Unlock And Open Door – Call ZONOsanitech™ And Report Code 101

Corrective Action
1. Do NOT turn the Power Switch to “off.”
2. It is safe to unlock and open the door by entering the Access Code and remove items inside the ZONO™ Cabinet. Always lock the door of the ZONO™ Cabinet when not unloading and loading.
3. Call ZONOsanitech™ at 770-212-9201 Ext 3 and report code 101.
4. Items were sanitized.
5. Do NOT use the ZONO™ Cabinet until told to do so by ZONOsanitech™.

Items Not Sanitized – Door Locked – Safe To Unlock And Open Door – Call ZONOsanitech™ And Report Code 102

Corrective Action
1. Do NOT turn the Power Switch to “off.”
2. It is safe to unlock and open the door by entering the Access Code and remove items. Always keep the door to the ZONO™ Cabinet locked when not unloading and loading.
3. Call ZONOsanitech™ at 770-212-9201 Ext 3 and report code 102.
4. Items were NOT sanitized.
5. Do NOT use the ZONO™ Cabinet until told to do so by ZONOsanitech™.

Error – Door Locked – Safe to Unlock and Open Door – Call ZONOsanitech™ and Report Code 104

Corrective Action
1. Do NOT turn the Power Switch to “off.”
2. It is safe to unlock and open the door by entering the Access Code and to remove items. Always keep the door to the ZONO™ Cabinet locked when you are not loading or unloading the ZONO™ Cabinet.
3. Call ZONOsanitech™ at 770-212-9201 Ext 3 and report code 104. Assume items were NOT sanitized.
4. Do NOT use the ZONO™ Cabinet until told to do so by ZONOsanitech™.

Sanitizing Extended – Door Locked – Not Safe To Unlock & Open Door – Call ZONOsanitech™ And Report Code 103

Corrective Action
1. Do NOT turn the Power Switch to “off.” Turning the ZONO™ Cabinet off will prevent the ZONO™ Cabinet from destructing the ozone. The ozone destructor will operate, and you will hear the fan running.
2. Do NOT unlock and open the ZONO™ Cabinet door because ozone inside the ZONO™ Cabinet is high and you could be exposed to ozone.
3. Call ZONOsanitech™ at 770-212-9201 Ext 3 and report code 103.
4. Items were sanitized.
5. Do NOT use the ZONO™ Cabinet until told to do so by ZONOsanitech™.
6. When it is safe to unlock and open the door the Display will say: Sanitizing Complete – Door Locked – Safe to Unlock And Open Door – Call ZONOsanitech™ And Report Code 103. Always keep the door to the ZONO™ Cabinet locked when not unloading and loading.

Sanitizing Complete – Door Locked – Safe to Unlock & Open Door – Call ZONOsanitech™ And Report Code 103

Corrective Action
1. Do NOT turn the Power Switch to “off.”
2. It is safe to unlock and open the door by entering the Access Code and remove items. Always keep the door to the ZONO™ Cabinet locked when you are not loading or unloading the ZONO™ Cabinet.
3. Call ZONOsanitech™ at 770-212-9201 Ext 3 and report code 103.
4. Items were sanitized.
5. Do NOT use the ZONO™ until told to do so by ZONOsanitech™.

Heat Unit Error – Safe To Unlock And Open Door – Call ZONOsanitech™ and Report Code 107

Corrective Action
1. Do NOT turn the Power Switch to “off.”
2. It is safe to unlock and open the door. Press the “ Press Here to Reset ” box on the Display to get to the screen to enter the Access Code to open the door and to remove items from inside the ZONO™ Cabinet. Always keep the door to the ZONO™ Cabinet locked when not loading or unloading the ZONO™ Cabinet.
3. Call ZONOsanitech™ at 770-212-9201 Ext 3 and report code 107.
4. Assume the HEAT CYCLE did NOT kill lice, bed bugs and their eggs.
5. Do NOT run a HEAT Cycle until told to do so by ZONOsanitech™. A SANITIZING cycle may be run and the door may be locked.

Error – Not Sanitized – Door Locked – Not Safe To Unlock And Open – Call ZONOsanitech™ And Report Code 108

Corrective Action
1. Do NOT turn the Power Switch to “off.” Turning the ZONO™ Cabinet off will prevent the ZONO™ Cabinet from destructing the ozone. The ozone destructor will continue to operate, and you will hear the fan running to destruct ozone.
2. Do NOT unlock and open the ZONO™ Cabinet door because ozone inside the ZONO™ Cabinet is high and you could be exposed to ozone.
3. Call ZONOsanitech™ at 770-212-9201 Ext 3 and report code 108.
4. Assume items were NOT sanitized.
5. Do NOT use the ZONO until told to do so by ZONOsanitech™.

10. Emergency Procedures

Person inside the ZONO™ Cabinet during a cycle

ZONOsanitech™ has never been notified of an incident involving a person inside a cabinet. Safety measures to help prevent such an incident include the requirement to open the door to press the **Green Button**, glass door allowing visibility inside the ZONO™ Cabinet, and the location of the controls at a height inaccessible to children. However, if you see or suspect that someone is inside the ZONO™ Cabinet during a cycle:

1. Press the **Exterior Emergency Stop Button**. If there is ozone inside the ZONO™ Cabinet, the ozone destructor will immediately begin destructing ozone.
2. Do **NOT** turn the **Power Switch OFF**. The ZONO™ Cabinet must have power to destroy any existing ozone inside the ZONO™ Cabinet.
3. Open the ZONO™ Cabinet door.
4. Remove the person from the ZONO™ Cabinet and close the door promptly.
5. If the person was in the ZONO™ Cabinet during a SANITIZING cycle, the message **Ozone Detected In Room – Turn Off ZONO Immediately – Leave Room Now - Call ZONOsanitech™** may appear on the **Display**.
6. If a SANITIZING cycle was running when the door was opened evacuate the room for at least 15 minutes to allow any ozone that escaped from the cabinet when the door was open to revert to oxygen because it is unknown how much ozone escaped into the room when the door was opened.
7. Seek medical attention for the person inside the ZONO™ Cabinet and follow the instructions in “Suspected or confirmed ozone exposure” and “First Aid Measures” on page 42.
8. Assume items were **NOT** sanitized.



Suspected or Confirmed Ozone Exposure



Follow these instructions if **ANY** of the following situations occur:

- Anyone in the vicinity of the ZONO™ Cabinet smells electrical sparks, lightning, or the fresh scent after a thunderstorm or heavy rain;
- Anyone in the vicinity of the ZONO™ Cabinet experiences headache, sore throat, or irritation in the eyes and nose;
- You believe that ozone gas is coming from the ZONO™ Cabinet.

1. Turn the ZONO™ Cabinet **Power Switch** “off” or unplug the ZONO™ Cabinet.
2. Evacuate the room where the ZONO™ Cabinet is located.
3. Do **NOT** open the ZONO™ Cabinet door.
4. Seek medical attention for headache, coughing, dry throat, shortness of breath, or irritation of the respiratory tract, eyes, or skin.
5. Allow at least 15 minutes for any suspected ozone to revert to oxygen before reentering the room in which the ZONO™ Cabinet is located.
6. Assume items were **NOT** sanitized.
7. Call ZONOsanitech™ at 770-212-9201 Ext 3.
8. Do **NOT** operate the ZONO until told to do so by ZONOsanitech™.

First Aid Measures

Route of Entry	Symptoms	First Aid Measure
Skin Contact	Irritation	Rinse with water
Eye Contact	Irritation	Rinse cautiously with water for several minutes. Remove contact lenses, if present and easy to do. Continue rinsing.
Ingestion	Not an expected route of exposure	
Inhalation	Headache, cough, heavy chest, shortness of breath	Remove to fresh air

For severe cases, or if symptoms don't improve, seek medical help.

11. General Care Instructions



Do **NOT** remove or open any cover or access port on the ZONO™ Cabinet **Engine** unless you have been authorized in writing to do so by ZONOsanitech™.

Doing so voids the warranty.



Only ZONOsanitech™- approved technicians may inspect or repair the ZONO™ Cabinet .

Cleaning

Use a commercial stainless-steel cleaner and microfiber cloth on all aluminum surfaces. You may see black aluminum oxide residue on your cloth. This residue is normal.

Weekly Care Tasks

There are two weekly tasks the operator is asked to perform.

Component	Check	Photos
Water Reservoir	<p>Check the water level.</p> <ol style="list-style-type: none"> 1. Remove the Water Reservoir from under the ZONO™ Cabinet Engine. 2. Fill the Water Reservoir to the fill line with clean distilled water and securely return it. <p>Failure to maintain the water level can result in failure to sanitize items!</p>	
Door Gaskets	<p>Inspect the Door Gasket attached to the door to ensure they are not torn or damaged.</p> <p>Do NOT:</p> <ul style="list-style-type: none"> • Clean the Door Gasket. They may be damaged by abrasion or chemicals. • Operate the ZONO™ Cabinet if the gasket is damaged. Call ZONOsanitech™. <p>Report any torn or damaged gasket to ZONOsanitech™ and do not use the ZONO™ Cabinet.</p>	<p>The gaskets are located along the top, sides and bottom of the inside of the door. The gasket is highlighted in yellow.</p> 

Moving the ZONO™ Cabinet

Take care when moving the ZONO™ Cabinet. It contains light bulbs and electronic components which may break or be damaged. If the ZONO™ Cabinet is moved to a new address, Zono Sanitech must be notified via the email address - service@zonosanitech.com

Ozone sensor maintenance

The ZONO™ Cabinet is equipped ozone two **Ozone Sensors** that monitor the ozone level.

Interior Ozone Sensor: Located on the bottom of the **Engine** in the right upper corner.

Exterior Ozone Sensor: Located outside of the sealed ZONO™ Cabinet.



Interior ozone sensor



Exterior ozone sensor

Replacement of Interior and Exterior Sensors

The **Ozone Sensors** are critical to the function of the ZONO™ Cabinet. The **Ozone Sensors** used in the ZONO™ Cabinet are expected to last for more than five years. When a sensor is no longer working properly, the ZONO™ Cabinet will show one of several messages that will direct you to call ZONOsanitech™. ZONOsanitech™ will assist you in determining if a new sensor is needed.

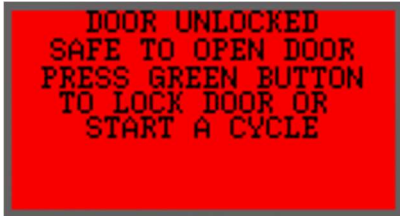
ZONOsanitech™ will provide you with new **Ozone Sensors** should they fail within the three-year warranty period of your ownership of the ZONO™ Cabinet. You are responsible for the cost of **Ozone Sensor** replacement after three years, unless you purchase an extended warranty or service plan.

Contact ZONOsanitech™ at 770-212-9201 Ext 3 to purchase replacement **Ozone Sensors**.

12. Statistics (Number of Cycles Run)

You can see the number of times a ZONO™ Cabinet SANITIZING cycles have been run for: (1) the current day, (2) the previous 7 days, (3) the previous 30 days, and (4) the previous 12 months. Follow these instructions:

- Does the **Display** show one of the screens below?
 - Yes – Go to Step 2. You can safely view statistics while a SANITIZING cycle is running or no cycle is running, as shown below. Viewing the Statistics screen will not interfere with the cycle.
 - No – You cannot view statistics. Wait until one of the below screens appears.



- Press **F1** on the **Keypad**.
- The **Statistics Password** screen appears. This screen works the same way, whether the background is **GREEN** (machine locked) or **RED** (machine unlocked).



- Enter **100** using the numbers on the touch screen and then touch **ENT**. You cannot change this **Password**.
- The **Statistics** screen appears, showing the total number of **Completed SANITIZING Cycles** during the time periods.

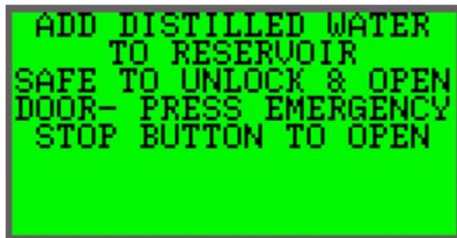
CYCLES TODAY	5
PREV 7 DAYS	30
PREV 30 DAYS	75
PREV 12 MONTHS	535
TOTAL CYCLES	535

6. Record these numbers. They will change every time the ZONO™ Cabinet runs and are not stored.

Press **F5** on the **Keypad**. You will return to the screen that was being displayed previously unless a cycle completed while you were checking the statistics. In that case, you will see the “SANITIZING or HEAT Cycle Complete” screen.

13. ZONO™ Cabinet Humidification System

Important – Use only **distilled** water. Tap water can contain impurities.



If you see either of these messages appear, on the display, add distilled water to the reservoir.



14. Service Guidance

More than 90% of downtime situations, the service specialist will resolve during the call with immediate on-site corrective action. There is never a charge for phone service consultation, in or outside of warranty coverage.

Step	Description	Information Needed / Timeframes
1	Consult User Manual Section 10 & Section 11 to determine whether issues can be corrected or if a call to ZONOSanitech™ is needed	
2	If issue is not resolved, contact ZONOSanitech™ at 770-212-9201 Ext 3	<p>Information Needed When You Call:</p> <ul style="list-style-type: none"> • Serial Number of your ZONO™. This number is located on the right side of machine near the top on a white label. • Facility Address • Contact name & phone number • Exact message that is being displayed on the ZONO™ display screen • Description of the issue
3	<p>If the issue requires on-site service, the ZONOSanitech™ service specialist will schedule a qualified technician to repair the ZONO™.</p> <p>If the ZONO™ is in the warranty coverage period, there is no charge for service. If the warranty coverage period has ended, you may be charged for the service call.</p> <p>Warranty is limited to ZONO™ defects in materials and workmanship during the warranty period.</p>	<p>In major metro areas, the visit will be within 1-2 business days. Other areas may require 3 business days.</p>

15. Safety Data Sheet (formerly MSDS)

Human Hazards and Precautionary Statements – see Section 2

Physical or Chemical Hazards and Precautionary Statements – see Section 2

Environmental Hazards and Precautionary Statements – See Section 2

Product Name: Ozone

Chemical Name/Synonyms: Triatomic Oxygen, Trioxygen, CAS Registry Number 10028-15-6

Company: ZONOsanitech™

147 Technology Parkway

Peachtree Corners, GA 30092

Product Use: This SDS is limited to ozone generated by an EPA-regulated pesticide device (which includes an ozone generator inside of a sealed cabinet) used for disinfecting/sanitizing items placed in the device.

In an emergency, call 911.

24-Hour Emergency Contact: CHEMTREC +1 800-424-9300

For information about this SDS, during normal business hours, contact: 770-212-9201, Ext 3.

Section 2: Hazard(s) Identification

2.1 Classification of the substance or mixture -- GHS Classifications in accordance with OSHA Hazard Communication Standard (29 CFR 1910.1200)

Oxidizing gas, Cat. 1

Acute toxicity, Cat. 1

Eye damage, Cat. 1

Skin corrosion, Cat. 1B

STOT RE, Cat. 1

Acute aquatic toxicity, Cat. 1

2.2 Label Elements

Signal word: Danger

Hazard Statements:

May cause or intensify fire; oxidizer

Fatal if inhaled

Causes severe skin burns and eye damage

Causes damage to organs through prolonged or repeated exposure

Very toxic to aquatic life

Precautionary Statements:

Keep away from readily combustible materials and reducing agents.

Keep reduction valves/valves and fittings free from oil and grease.

In case of fire: Stop leak if safe to do so.

Do not breathe gas.

Use in well-ventilated place. Keep unit tightly closed when gas is present.

If inhaled or exposed, or you feel unwell: Remove person to fresh air, keep comfortable for breathing and immediately call a poison center or physician.

If in eyes: Rinse cautiously with water for several minutes. Remove contact lenses, if present and easy to do.

Continue rinsing.

Pictograms:

Flame over circle
 Skull and crossbones
 Health hazard
 Corrosion
 Aquatic Toxicity



Section 3: Composition/ Information on Ingredients

3.1 Hazardous Substance

Chemical Name	Synonym	CAS#	Concentration
Ozone	Triatomic Oxygen, Trioxygen	10029-15-6	Max. approx. 25 ppm

Section 4: First-Aid Measures

Route of Entry	Symptoms	First Aid Measure
Skin Contact	Irritation	Rinse with water
Eye Contact	Irritation	Rinse cautiously with water for several minutes. Remove contact lenses, if present and easy to do. Continue rinsing.
Ingestion	Not an expected route of exposure	
Inhalation	Headache, cough, heavy chest, shortness of breath	Remove to fresh air

For severe cases, or if symptoms don't improve, seek medical help.

Section 5: Fire-Fighting Measures

5.1 Extinguishing media

Ozone itself is not flammable. As a strong oxidant it may accelerate, even initiate, combustion, or cause explosions. Use whatever extinguishing agents are indicated for the burning materials.

5.2 Special hazards arising from the substance or mixture

May accelerate existing fire. May initiate fire/explosion in combustible materials. May react explosively with alkenes, aromatic compounds, bromine, combustible gases, diethyl ether, hydrogen bromide, hydrogen iodide, isopropylidene compounds, and other oxidizable materials.

Section 6: Accidental Release Measures

The ZONO™ is designed to prevent accidental releases. Should one occur, immediately shut down the ZONO™, and evacuate and ventilate the area until ozone levels subside to a <0.1 ppm 8 hour TWA and .03 ppm 15 minute TWA. Determine and repair/remedy the source of the accidental release before further use of the unit.

Section 7: Handling and Storage

The ZONO™ is designed to generate ozone on demand. The ozone is generated and contained within the closed unit and eliminated before the unit is reopened to remove treated items.

Section 8: Exposure Controls/Personal Protection

8.1 Control parameters for Ozone

Permissible Exposure Limits

Fed-OSHA 8-hr TWA PEL	Cal-OSHA 8-hr TWA PEL	Cal-OSHA 15-min. TWA Ceiling Limit PEL	NIOSH Immediately Dangerous to Life or Health (IDLH)
0.1 ppm 0.2 mg/m ³	0.1 ppm	0.3 ppm	5 ppm

ACGIH-TLVs

TLV–TWA (8 hours), 0.05 ppm (0.1 mg/m³), Heavy work

TLV–TWA (8 hours), 0.08 ppm (0.16 mg/m³), Moderate work

TLV–TWA (8-hours), 0.10 ppm (0.2 mg/m³), Light work

TLV–TWA (≤ 2 hours), 0.2 ppm (0.39 mg/m³), Heavy, moderate, or light workloads

8.2 Exposure controls

Engineering Controls. ZONO™ is designed to maintain the door(s) closed while ozone is present and to eliminate the ozone before the door(s) is/are reopened.

Respiratory protection. Should never be needed. Use either a chemical air filtering respirator or self-contained breathing apparatus approved by NIOSH for the condition of use whenever ventilation is not adequate to maintain exposures below the applicable occupational exposure limit.

No PPE (Hand protection, Eye protection or Skin and body protection) should be needed because all ozone should be eliminated before the ZONO™ door(s) is/are opened to remove treated items.

Section 9: Physical and Chemical Properties

Form: gas

Odor: distinct pungent odor

Odor threshold: 0.02 to 0.05 ppm; exposure causes desensitization

pH: Not applicable

Melting point/melting range: Not applicable

Boiling point/boiling range: -112°C/-169°F

Flash point Not applicable

Evaporation rate: Not applicable

Flammability: Not flammable but strong oxidizer

Upper/lower flammability or explosive limits: Not applicable

Auto ignition temperature: Not applicable

Danger of explosion: not explosive but strong oxidizer

Vapor pressure: Not applicable

Vapor density: Vapor density 1.6 (air = 1)

Relative density: Not applicable

Solubility in/Miscibility with water: 570 mg/L @20°C & 100% O₃; 0.64 mg/L @0°C

Section 10: Stability and Reactivity

Reactivity: Ozone is a strong oxidizer

Chemical stability: Unstable

Conditions to avoid: Do not place reducing agents in the ZONO™

Incompatible materials: Reducing agents.

Hazardous decomposition products: None, decomposes to oxygen.

Section 11: Toxicological Information

Potential Routes of Exposure and Potential Health Effects

- a. **Likely routes of exposure:** Inhalation, eyes, and skin exposure.
- b. Effects of Acute Exposure: Discomfort, including headache, coughing, dry throat, shortness of breath, irritation of respiratory tract and possibly skin and eyes. Higher levels of exposure intensify symptoms.
- c. Effects of Chronic Exposure: Similar to effects of acute exposure, with possible development of chronic breathing disorders, including asthma.

d. Numerical measures of toxicity (such as acute toxicity estimates)

- Inhalation: LC50 -- Mice, 12.6 ppm for 3 hours; Hamsters, 35.5 ppm for 3 hours; meets criteria for Acute toxicity, Cat. 1.
- Skin: ECHA dossier for ozone includes the following discussion:

Effects of ozone on antioxidant levels and lipid peroxidation were observed in the murine and human skin at a concentration of 1 ppm in air after exposure of up to 2 hours. This leads to the assumption that prolonged exposure to high concentrations of ozone can cause irreversible and corrosive damage to the skin. This is further supported by its physicochemical properties as a strong oxidizing agent as well as by a large amount of inhalation studies showing that acute exposure to ozone at 1-2 ppm already causes lung injury in animals in vivo. Based on this argumentation, it is concluded that highly concentrated ozone is corrosive to tissues of living animals, and it is not ethical to perform additional, in vivo experiments for classification of the pure substance.

<https://echa.europa.eu/registration-dossier/-/registered-dossier/22480/7/4/1>

Eye: Under REACH, testing for eye irritation is not performed on substances known or predicted to be corrosive to skin. Such substances are automatically considered to be severely damaging to the eye.

<https://echa.europa.eu/registration-dossier/-/registered-dossier/22480/7/4/1>. This SDS follows that approach.

Carcinogenic effects (NTP, IARC, OSHA): **No**.

Mutagenic effects: ozone is not considered genotoxic.

Reproductive toxicity: No, based on the available data per the ECHA dossier for ozone.

<https://echa.europa.eu/registration-dossier/-/registered-dossier/22480/7/9/1>

Sensitization: No, based on the available data per the ECHA dossier for ozone.

<https://echa.europa.eu/registration-dossier/-/registered-dossier/22480/7/5/1>

Target organs: respiratory system, eyes and, to a lesser extent, skin.

Section 12: Ecological Information (non-mandatory)

Per the ECHA dossier:

The lowest LC₅₀ value after a 96-hr. continuous exposure of fish juveniles to ozone reported in the scientific literature was ca 0.008 mg/L. Ozone has to be classified as acute aquatic toxicity category 1. The lowest NOEC value after a 3 months partial chronic testing of freshwater fish juveniles to ozone reported in the scientific literature was 2 µg/L. For marine fish only a 21-d study is available, where fish were exposed to ozone and ozone produced oxidants. The derived NOEC is 60 µg/L. Both values are below the threshold of 1 mg/L hence ozone is classified as chronic aquatic toxicity category 1.

<https://echa.europa.eu/registration-dossier/-/registered-dossier/22480/6/2/1>

Section 13: Disposal Considerations (non-mandatory)

Off-gassing ozone is captured within the ZONO™ and drawn through an ozone destruct unit that breaks ozone down to oxygen before release into the atmosphere.

Section 14: Transport Information (non-mandatory)

NOT APPLICABLE, as ozone is created and broken down to oxygen within the ZONO™.

Section 15: Regulatory Information (non-mandatory)

US Federal Regulations

SARA Title III Section 302 EHS TPQ: 100 lbs.

SARA Title III Section 304, EHS RQ: 100 lbs.

SARA Section 313 (specific toxic chemical listings): > 10,000 lbs. used/year

Clean Air Act, Section 112 Hazardous Air Pollutants (HAPs):

TSCA (Toxic Substances Control Act):


Section 16: Other Information

Disclaimer: ZONOsanitech™ provides the information contained in this SDS in good faith and it is believed to be accurate and complete as of the effective date shown on this SDS. This SDS is intended solely as a guide to aid in the safe handling and use of the ZONO™ product by properly trained personnel. ZONOsanitech™ makes no representation or warranty, express or implied, as to the accuracy or completeness of the information contained in this SDS, and makes no representation or warranty, express or implied, as to the merchantability or fitness of the ZONO™ product for any purpose. ZONOsanitech™ is not responsible for SDSs obtained from any source other than ZONOsanitech™. If you have obtained an SDS from another source or if you are not sure that the SDS you have is current, please contact us for the most current version. The user is responsible for determining whether the ZONO™ product is suitable for user's method of use or application. ZONOsanitech™ will not be responsible for any damages or loss resulting from the use of, or reliance upon, the information in this SDS, or the use of the ZONO™ product. It is the buyer's/user's responsibility to ensure that its/his/her activities comply with all federal, state, and local laws.

SDS date of preparation/update: March 2, 2023

16. End User Limited Warranty Certification

Your End User Limited Warranty Certificate is shown. Read it carefully to ensure understanding of your rights and obligations to keep your warranty intact.



Warranty Period: Three (3) Years Starting: _____ Date of Delivery _____

LIMITED WARRANTY CERTIFICATE
Warranty Provider: **ZONO Sanitech, LLC**
147 Technology Parkway Ste. 100, Peachtree Corners, GA 30092
Phone: 770-212-9201; Email: service@zonosanitech.com

YOU (THE "END USER") HAVE PURCHASED THIS MANUFACTURER'S LIMITED WARRANTY ("WARRANTY") IN CONNECTION WITH THE PURCHASE OR RENTAL OF YOUR ZONO™ OZONE DISINFECTING & SANITIZING CABINET ("ZONO™") AND ACCESSORIES. THE ZONO™ CABINET IS A FEDERALLY REGULATED PEST-CONTROL PRODUCT THAT UTILIZES A COMBINATION OF PROCESS CONTROL, OZONE CONCENTRATION, HUMIDITY, AND TIME TO ACHIEVE CONSISTENT AND U.S. LABORATORY CONFIRMED DISINFECTION AND SANITIZATION LEVELS.

THIS LIMITED WARRANTY CERTIFICATE PROVIDES A BINDING AGREEMENT IN LIEU OF ALL OTHER WARRANTIES AND SETS FORTH THE EXCLUSIVE WARRANTY AND SERVICE OBLIGATIONS APPLICABLE TO YOUR PURCHASE OR RENTAL OF THE ZONO™ CABINET IN (A) THE UNITED STATES INCLUDING THE DISTRICT OF COLUMBIA AND U.S. TERRITORIES; OR (B) WORLDWIDE (EXCLUDING THE UNITED STATES, WASHINGTON D.C. AND U.S. TERRITORIES), TO THE FULLEST EXTENT PERMITTED BY LAW. WARRANTY PROVIDER, FOR ITSELF AND ITS MEMBERS, MANAGERS, AGENTS, ATTORNEYS, DISTRIBUTORS, AFFILIATES, AND ASSIGNS (COLLECTIVELY, "ZONO PARTIES"), EXPRESSLY DISCLAIMS ALL OTHER WARRANTIES, EXPRESS OR IMPLIED, INCLUDING, WITHOUT LIMITATION, ANY IMPLIED WARRANTY OF MERCHANTABILITY OR FITNESS FOR A PARTICULAR PURPOSE, EVEN IF INFORMED OF SUCH PURPOSE AND REQUIRES ARBITRATION OF ANY DISPUTES. AS AN EXPRESS CONDITION OF THIS WARRANTY, END USER WAIVES ANY RIGHT AS A REPRESENTATIVE OR MEMBER IN ANY CLASS OR REPRESENTATIVE ACTION ("CLASS ACTION") TO ASSERT ANY CLAIM AGAINST ZONO PARTIES EXCEPT WHERE SUCH WAIVER IS PROHIBITED BY LAW OR DEEMED BY A COURT OF LAW TO BE AGAINST PUBLIC POLICY. TO THE EXTENT END USER IS PERMITTED BY SUCH COURT TO PROCEED WITH A CLASS ACTION AGAINST A ZONO PARTY OR PARTIES, (I) END USER SHALL NOT BE ENTITLED TO RECOVER ATTORNEYS' FEES OR COSTS ASSOCIATED WITH PURSUING THE CLASS ACTION (NOTWITHSTANDING ANY OTHER PROVISION IN THIS AGREEMENT); AND (II) THE PARTY WHO INITIATES OR PARTICIPATES AS A MEMBER OF THE CLASS AGREES THAT IT WILL NOT SUBMIT A CLAIM OR OTHERWISE PARTICIPATE IN ANY RECOVERY SECURED THROUGH THE CLASS ACTION.

WARRANTY OF PERFORMANCE. During the Warranty Period, Warranty Provider warrants that, when used as directed in the User Manual, the ZONO™ Cabinet will kill (A) 99.9% of Common Viruses (disinfecting level) on non-porous surfaces where "Common Viruses" means Norovirus, Influenza-A, and Respiratory Syncytial Virus, and (B) 99.9% of Common Bacteria (sanitizing level) on non-porous, semi-porous and porous surfaces where "Common Bacteria" means Staphylococcus aureus, Methicillin-Resistant Staphylococcus aureus, Escherichia Coli, Streptococcus Pyogenes, Shigella ~~disenteriae~~, Salmonella Enteritidis, and Pseudomonas Aeruginosa. The optional Heating Unit (sold separately) kills lice, bed bugs, and their eggs. Subject to the warranties set forth herein, End User is solely responsible for the use of and the results from ZONO™ Cabinet.

The ZONO™ Cabinet is designed to be used as part of a comprehensive infection prevention and control program. No claim is made with respect to the overall results or efficacy of the ZONO™ Cabinet in connection with any specific infection prevention and control program, the success of which will depend on multiple factors beyond the control of the Warranty Provider. A comprehensive user manual ("User Manual") is included with your ZONO™ Cabinet purchase or rental. If you do not have a copy of the User Manual, contact the Warranty Provider for a replacement.

THE ZONO™ CABINET MUST ONLY BE OPERATED AS DIRECTED IN THE USER MANUAL. FAILURE TO FOLLOW INSTRUCTIONS IN THE USER MANUAL MAY COMPROMISE THE SAFETY OF THE USER AND OTHERS AND WILL VOID THE OBLIGATIONS OF MANUFACTURER AND WARRANTY PROVIDER UNDER THIS WARRANTY.

US WARRANTY SERVICE (for ZONO™ Cabinets located in the contiguous United States, Washington D.C., HI, AK, and U.S. territories only): The ZONO™ Cabinet as purchased or rented shall be free of defects in material and workmanship for the Warranty Period. Warranty Provider shall diagnose covered issues, if any, reported by End User and, in Warranty Provider's sole discretion, repair or replace the ZONO™ Cabinet as it shall deem necessary at Warranty Provider's sole expense, including parts, labor, and shipping. Warranty Provider may repair or replace the ZONO™ Cabinet at End User's location or require that End User return items or components to a repair center designated by Warranty Provider at Warranty Provider's cost. Following the Warranty Period, End User may obtain additional service on a fee-for-service basis at Warranty Provider's customary rates.

WORLDWIDE WARRANTY SERVICE (for ZONO™ Cabinets located Worldwide, where "Worldwide" means OUTSIDE of the contiguous United States, Washington D.C., AK, HI, and U.S. territories): The ZONO™ Cabinet as purchased or rented shall be free of defects in material and workmanship for the Warranty Period. Warranty Provider shall assist End User's ZONO™ Distributor ("Distributor") or Distributor's designated licensed electrician, provided at the expense of the Distributor, via email, in English, with diagnosis of covered issues, if any, reported to Warranty Provider. Warranty Provider will provide and ship replacement parts, under the terms of the applicable Distributor agreement, directly to Distributor's designated licensed electrician. Following the Warranty Period, Distributor may obtain additional service on a fee-for-service basis at Warranty Provider's customary rates. For Worldwide sales, Warranty Provider's obligations hereunder are solely to Distributor. In such sales, Warranty Provider supports Distributor in its provision to its customers of the warranty services set forth herein. Warranty Provider provides no direct End User support Worldwide other than to Distributor. Notwithstanding the foregoing, if End User purchased its ZONO™ Cabinet directly from Manufacturer and not from a distributor, Warranty Provider shall assist a licensed electrician, designated and provided at the expense of the End User and acceptable to Warranty Provider, in its sole discretion, in the same manner as assistance to a Distributor-designated technician is provided hereunder.

END USER OBLIGATIONS. During Warranty Period, End User shall promptly report to Warranty Provider (US machines only) or Distributor (Worldwide machines only) any apparent ZONO™ Cabinet malfunction or any service alert indicated on the ZONO™ Cabinet's display screen. Warranty Provider will diagnose performance issues in the English language and determine any need for service, repair, or replacement of covered items. If Warranty Provider ships a replacement part to End User or provides End User with a "loaner" part or ZONO™ Cabinet to be used while End User's covered part or ZONO™ Cabinet is repaired, End User shall pay Warranty Provider's full retail price, plus shipping, upon invoice, for any such part or ZONO™ Cabinet. If End User fails or refuses to return the damaged or loaner part or ZONO™ Cabinet, as applicable, promptly upon Warranty Provider's request and at Warranty Provider's expense, if End User moves the ZONO™ Cabinet to a new address, the move must be reported to Warranty Provider via email to service@zonosanitech.com.

WARRANTY LIMITATIONS. This Warranty is personal to and benefits only the End User and is expressly limited to defects in materials and workmanship during the applicable Warranty Period. The Warranty Period shall terminate, and all remaining warranties and service obligations shall be void, without refund, if Warranty Provider determines, in its sole discretion, that (i) any damage to ZONO™ Cabinet is the result of abuse, accident, modification, misuse, neglect, failure to perform standard recommended maintenance, vandalism, theft, fire, water, or casualty; (ii) repair has been attempted without Warranty Provider's written permission (including opening machine for inspection) by any person other than Warranty Provider or its authorized technician; or (iii) the ZONO™ Cabinet is no longer the property of the End User listed in our customer database. Scratches in sheet metal, glass or polycarbonate doors, or other cosmetic damage, including surface corrosion (e.g. from detergents, cleaners, lubricants, or other chemicals) are not covered. Warranty Provider is not responsible for End User's loss of use or income under any circumstances during such time as the ZONO™ Cabinet is nonfunctioning, under repair, or awaiting replacement. The sole remedy of End User (or Distributor as applicable) against Warranty Provider for any covered claim shall be the ZONO™ Cabinet's repair or replacement, in Warranty Provider's sole discretion. Warranty Provider is not responsible for any damages, claims or losses, including without limitation, consequential damages, exemplary damages, attorney's fees or defense costs, arising out of, in connection with, or related to End User or third-party's operation, maintenance and use of the ZONO™ Cabinet, including without limitation: (A) any sickness, injury or death resulting from use of the ZONO™ Cabinet in a manner for which it was not designed or intended or in any manner contrary to the User Manual or any direction or instruction by manufacturer, distributor, service technician, or Warranty Provider; (B) any sickness, injury or death resulting from End User's failure to report malfunctions or to properly secure or maintain the ZONO™ Cabinet; (C) any sickness, injury or death resulting from improper use of the ZONO™ Cabinet or any use of the ZONO™ Cabinet by any person not trained by End User in the use of the ZONO™ Cabinet as required in the User Manual; (D) any modification of the ZONO™ Cabinet performed without Warranty Provider's written authorization; (E) any third party claim against End User or its employees or agents, or in connection with any ZONO™ Cabinet under End User's jurisdiction or control.

ARBITRATION. Any controversy or claim in connection with this Agreement shall be settled by arbitration administered by a single arbitrator, in Pulmon County, Georgia, in accordance with the Commercial Arbitration Rules of the American Arbitration Association, and judgment on any award rendered by the arbitrator entered in any court of competent jurisdiction. The foregoing shall not preclude an application for injunctive relief hereunder for which purpose each party (i) consents to the personal jurisdiction of any state or federal court serving Pulmon County, Georgia (and any corresponding appellate court); and (ii) waives any venue or inconvenient forum defense to any proceeding maintained in such courts. Notwithstanding the foregoing, no agreement to arbitrate disputes hereunder shall apply to claims for unpaid sums with respect to the purchase or service of ZONO™ Cabinet Products.

17. EPA Label

The Environmental Protection Agency requires that the information contained in the label on the right side of your ZONO™ Cabinet be visible at all times. If after installation, this label is not visible, contact ZONOsanitech™ for a replacement label at 770-212-9201 Ext 3.

The following page contains a temporary label.

Until your permanent replacement label arrives, remove the temporary label from the User Manual and affix it to your ZONO™ Cabinet where it is clearly visible.

When your replacement label arrives, you may discard the temporary version and affix the permanent label to your ZONO™ Cabinet where it is clearly visible.



KKT inc DBA Lockwood Manufacturing Company

31251 Industrial Road
Livonia, MI 48150

EPA Est. 89639-MI-1

Active Ingredients: Ozone (20 ppm) and water (75% RH). The ZONO™ Cabinet generates Ozone and humidifies the atmosphere using water during operation leaving no or trace amounts of water. The ZONO™ Cabinet contains no ingredients during shipping. It kills 99.9% of common viruses+ on non-porous surfaces and 99.9% of common bacteria* on non-porous, semi-porous, and porous surfaces.

WARNING: The levels of ozone gas within the ZONO™ Cabinet during the sanitization cycle can be harmful or fatal. Do not place people or animals inside the ZONO™ Cabinet. Only items identified in the ZONO™ USER MANUAL may be placed in the ZONO™ Cabinet. Only unlock and open the door of the ZONO™ Cabinet when the panel screen reads: "SAFE TO UNLOCK" or "SAFE TO OPEN DOOR" or "LOCK DOOR NOW". Attempting to or unlocking or opening the door of the ZONO™ Cabinet during operation could be harmful or fatal.

DIRECTIONS FOR USE: These directions for use must be followed. ALL PERSONS MUST READ THE ZONO™ USER MANUAL BEFORE OPERATING THE ZONO™ CABINET AND OPERATE THE ZONO™ CABINET IN ACCORDANCE WITH THE ZONO™ USER MANUAL.

+Disinfecting level (kills 99.9%): Norovirus, Influenza-A, and Respiratory Syncytial Virus.

*Sanitizing level (kills 99.9%): Staphylococcus aureus, Methicillin-Resistant Staphylococcus aureus, Escherichia Coli, Streptococcus Pyogenes, Shigella dysenteriae, Salmonella Enteritidis, and Pseudomonas Aeruginosa.