

! For your safety, follow ALL instructions in the User Manual to minimize the risk of fire, electric shock, exposure to ozone gas, property damage, personal injury, or loss of life.

Running a Cycle

1

Load the Cart into the ZONO™ Cabinet



2

Reach Inside and Press the Green Button



Green button located inside at the top of the ZONO™, on the right side.

3

Close Door, Enter the Access Code Press Enter and Select Cycle to Run or Lock Door



Enter access code: 1364, Enter



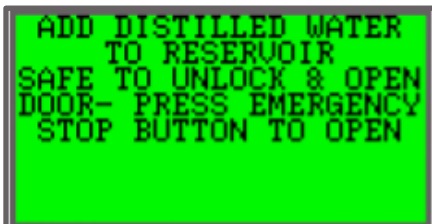
Lock Door or Choose cycle to run.

Note:

- If you do not run a cycle or lock door, the ZONO™ Cabinet will beep, alerting you to enter code to lock door.
- Not all models have a heat or dry cycle.
- Water reservoir must be removed before running a heat or dry cycle.
- Avoid possible mold growth by not storing items in the ZONO™ Cabinet.

Reservoir Usage Tips

- Use distilled water.
- Avoid possible mold growth by not storing items in the ZONO™ Cabinet for extended periods of time. If the ZONO™ Cabinet will not be used for one week or more, remove water reservoir from cabinet.



If this message appears, add distilled water to the reservoir.

! For your safety, follow ALL instructions in the User Manual to minimize the risk of fire, electric shock, exposure to ozone gas, property damage, personal injury, or loss of life.

Visual Check

- To ensure the doors will lock properly, make sure doors are level.
 - To adjust leveling, use the included ZONO™ wrench.



Level Doors

Turn Power On

- Plug the ZONO™ Cabinet into outlet specified in the user manual. Our most common models (SC 1 and SC 2) utilize a normal household outlet.



Turn On



NOTICE

Do Not Store Objects on Top of the ZONO™ Cabinet.

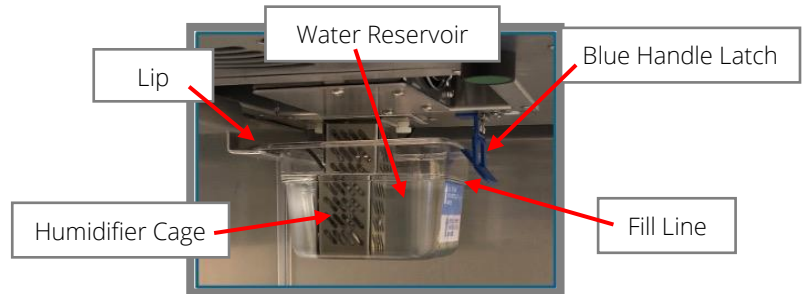
Set-up Humidity System

- Add **distilled water** up to the fill line in the **Water Reservoir**.
 - Using **distilled water** ensures that there will be no mineral build up on the **Water Reservoir**. Mineral build up can cause deposits of oxidation inside the ZONO™ Cabinet.

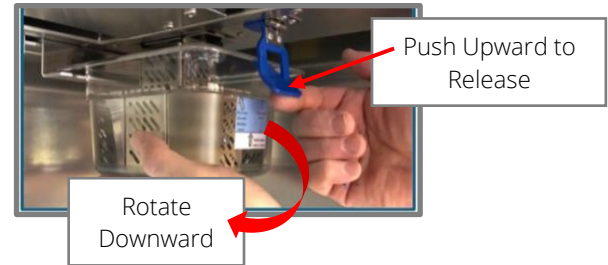


Note: Water Reservoir must be removed before running a heat or dry cycle.

- Installing Water Reservoir:** Center Water Reservoir around humidifier cage, rest rear lip of reservoir on lip in cabinet, and rotate reservoir upward until Blue Handle Latch snaps into place underneath.



- Removing Water Reservoir for Refill:** Support the reservoir underneath, push Blue Handle Latch upwards, and rotate reservoir downward.
 - It is normal for some water droplets to fall from humidifier cage when removing reservoir.



The Magic Eraser included with each machine, is to remove fingerprints from surfaces.



Not Using the ZONO™ for a Week or More? As with any appliance that utilizes water, avoid possible mold growth by not storing items in the ZONO™ or leaving standing water for a week or more. Drain the Water Reservoir, wash with soapy water, and air dry thoroughly. Access the water reservoir by lifting the humidity cage up and out, placing it on a paper towel in the machine. Water reservoir can be removed from its holder, emptied, washed with soapy water and air dried. When you are ready to use the ZONO™ after the idle period, add distilled water to the fill line in the reservoir, place humidity cage in the reservoir and place back in the holder at the bottom of the cabinet.